

Datasheet for ABIN5585756

**anti-PLA2G3 antibody**[Go to Product page](#)**1** Image

## Overview

|              |   |
|--------------|---|
| Quantity:    | 50 µg   |
| Target:      | PLA2G3  |
| Reactivity:  | Human, Cow, Monkey, Pig, Gorilla                            |
| Host:        | Rabbit  |
| Clonality:   | Polyclonal  |
| Conjugate:   | This PLA2G3 antibody is un-conjugated                       |
| Application: | Immunohistochemistry (Paraffin-embedded Sections) (IHC (p)) |

## Product Details

|                   |  |
|-------------------|--|
| Purpose:          | Rabbit polyclonal antibody raised against synthetic peptide of PLA2G3.   |
| Immunogen:        | A synthetic peptide (conjugated with KLH) corresponding to human PLA2G3. |
| Specificity:      | Internal domain of human.  |
| Cross-Reactivity: | Cow, Gorilla, Human, Monkey, Pig   |

## Target Details

|                   |  |
|-------------------|--|
| Target:           | PLA2G3   |
| Alternative Name: | PLA2G3 ( <a href="#">PLA2G3 Products</a> )                                   |
| Background:       | Full Gene Name: phospholipase A2, group III<br>Synonyms: GIII-SPLA2,SPLA2III |
| Gene ID:          | 50487  |

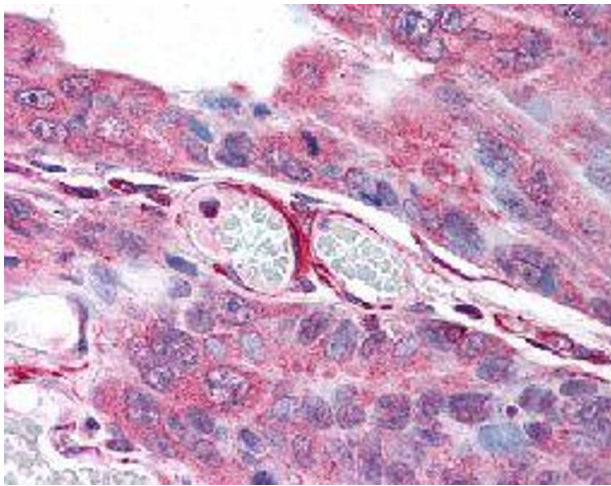
## Application Details

|                    |  |
|--------------------|--|
| Application Notes: | Immunohistochemistry (Formalin/PFA-fixed paraffin-embedded sections) (2.5 µg/mL)<br>The optimal working dilution should be determined by the end user. |
| Restrictions:      | For Research Use only  |

## Handling

|                    |  |
|--------------------|--|
| Format:            | Liquid   |
| Buffer:            | In PBS (0.09 % sodium azide)   |
| Preservative:      | Sodium azide   |
| Precaution of Use: | This product contains Sodium azide: a POISONOUS AND HAZARDOUS SUBSTANCE which should be handled by trained staff only. |
| Storage:           | 4 °C,-80 °C  |
| Storage Comment:   | Store at 4°C. For long term storage store at -80°C.<br>Aliquot to avoid repeated freezing and thawing.                 |

## Images



### Immunohistochemistry

**Image 1.** Immunohistochemical (Formalin/PFA-fixed paraffin-embedded sections) staining in human colon carcinoma with PLA2G3 polyclonal antibody .