

Datasheet for ABIN5585762
anti-PLA2G5 antibody (AA 103-132)[Go to Product page](#)

2 Images

Overview

Quantity:	400 µL
Target:	PLA2G5
Binding Specificity:	AA 103-132
Reactivity:	Human
Host:	Rabbit
Clonality:	Polyclonal
Conjugate:	This PLA2G5 antibody is un-conjugated
Application:	Western Blotting (WB), Immunohistochemistry (Paraffin-embedded Sections) (IHC (p))

Product Details

Purpose:	Rabbit polyclonal antibody raised against synthetic peptide of PLA2G5
Immunogen:	A synthetic peptide (conjugated with KLH) corresponding to amino acids 103-132 at C-terminal region at human PLA2G5.
Cross-Reactivity:	Human

Target Details

Target:	PLA2G5
Alternative Name:	PLA2G5 (PLA2G5 Products)
Background:	Full Gene Name: phospholipase A2, group V Synonyms: DKFZp686C2294,GV-PLA2,MGC46205,PLA2-10,hVPLA(2)

Target Details

Gene ID:	5322
Pathways:	Inositol Metabolic Process

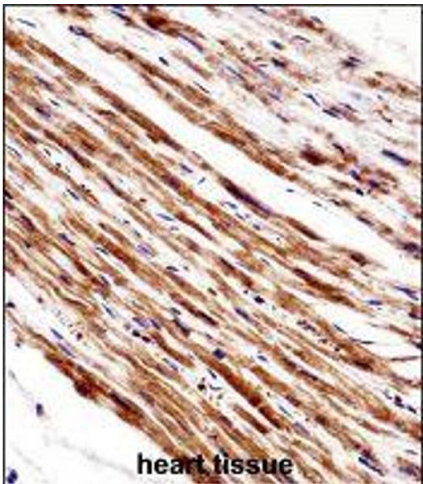
Application Details

Application Notes:	Immunohistochemistry (1:10-50) Western Blot (1:1000) The optimal working dilution should be determined by the end user.
Restrictions:	For Research Use only

Handling

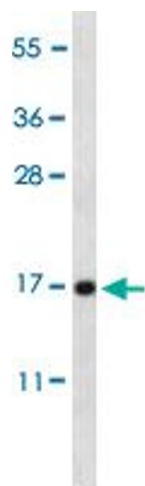
Format:	Liquid
Buffer:	In PBS (0.09 % sodium azide)
Preservative:	Sodium azide
Precaution of Use:	This product contains Sodium azide: a POISONOUS AND HAZARDOUS SUBSTANCE which should be handled by trained staff only.
Storage:	4 °C,-20 °C
Storage Comment:	Store at 4°C. For long term storage store at -20°C. Aliquot to avoid repeated freezing and thawing.

Images



Immunohistochemistry

Image 1. Immunohistochemistry (Formalin/PFA-fixed paraffin-embedded sections) of human heart tissue with PLA2G5 polyclonal antibody followed by peroxidase conjugation of the secondary antibody and DAB staining.



Western Blotting

Image 2. Western blot analysis of PLA2G5 polyclonal antibody in HL-60 cell line lysates (35ug/lane). PLA2G5 (arrow) was detected using the purified polyclonal antibody.