



Datasheet for ABIN5585812  
**anti-PLEKHG1 antibody**



[Go to Product page](#)

1 Image

Overview

Quantity:	100 µL
Target:	PLEKHG1
Reactivity:	Human
Host:	Rabbit
Clonality:	Polyclonal
Conjugate:	This PLEKHG1 antibody is un-conjugated
Application:	Immunohistochemistry (Paraffin-embedded Sections) (IHC (p))

Product Details

Purpose:	Rabbit polyclonal antibody raised against recombinant PLEKHG1.
Immunogen:	Recombinant protein corresponding to amino acids of human PLEKHG1.
Sequence:	CQDHLYNLSG RKGISAKSQP YHRSQSSSSV LINKSMDSIN YPSDVGKQQL LSLHRSSRCE SHQDLLPDIA DSHQQGTEKL SDLTLQDSQK VVVVN
Isotype:	IgG
Cross-Reactivity:	Human

Target Details

Target:	PLEKHG1
Alternative Name:	PLEKHG1 ( <a href="#">PLEKHG1 Products</a> )
Background:	Full Gene Name: pleckstrin homology domain containing, family G (with RhoGef domain)

## Target Details

---

member 1

Synonyms: FLJ31738,KIAA1209

---

Gene ID: 57480

## Application Details

---

Application Notes: Immunohistochemistry (1:50-1:200)  
The optimal working dilution should be determined by the end user.

---

Restrictions: For Research Use only

## Handling

---

Format: Liquid

---

Buffer: In PBS, pH 7.2 (40 % glycerol, 0.02 % sodium azide)

---

Preservative: Sodium azide

---

Precaution of Use: This product contains Sodium azide: a POISONOUS AND HAZARDOUS SUBSTANCE which should be handled by trained staff only.

---

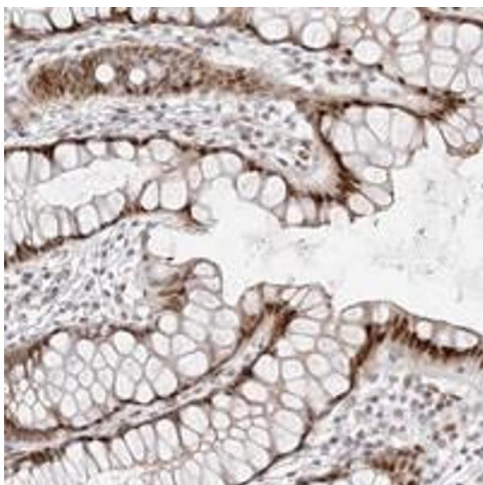
Storage: 4 °C,-20 °C

---

Storage Comment: Store at 4°C. For long term storage store at -20°C.  
Aliquot to avoid repeated freezing and thawing.

## Images

---



### Immunohistochemistry

**Image 1.** Immunohistochemical staining of human rectum with PLEKHG1 polyclonal antibody shows strong nuclear positivity in glandular cells at 1:50-1:200 dilution.