

Datasheet for ABIN5585847

anti-PLSCR1 antibody[Go to Product page](#)**2** Images

Overview

Quantity:	100 µL
Target:	PLSCR1
Reactivity:	Rat
Host:	Mouse
Clonality:	Monoclonal
Conjugate:	This PLSCR1 antibody is un-conjugated
Application:	Immunoprecipitation (IP), Immunofluorescence (IF), Flow Cytometry (FACS), Immunocytochemistry (ICC)

Product Details

Purpose:	Mouse monoclonal antibody raised against Plscr1.
Immunogen:	BALB/c mice were immunized with pooled lipid rafts isolated from RBL-2H3 cells. Hybridoma cells were obtained after fusion of SP02 mouse myeloma cells with spleen cells of immunized mice using standard procedures.
Clone:	13A6 [TEC-23]
Isotype:	IgG2a
Specificity:	This antibody binds to rat Phospholipid Scramblase 1 (PLSCR1), an 37-49 KDa membrane-associated protein accelerating bidirectional movement of plasmamembrane phospholipids during conditions of elevated calcium.
Cross-Reactivity:	Rat

Target Details

Target:	PLSCR1
Alternative Name:	Plscr1 (PLSCR1 Products)
Background:	Full Gene Name: phospholipid scramblase 1 Synonyms: MGC93252
Gene ID:	117540
Pathways:	Cellular Response to Molecule of Bacterial Origin

Application Details

Application Notes:	The optimal working dilution should be determined by the end user.
Restrictions:	For Research Use only

Handling

Format:	Liquid
Buffer:	In ascites (0.09 % sodium azide)
Preservative:	Sodium azide
Precaution of Use:	This product contains Sodium azide: a POISONOUS AND HAZARDOUS SUBSTANCE which should be handled by trained staff only.
Storage:	4 °C
Storage Comment:	Store at 4°C. Do not freeze. Aliquot to avoid repeated freezing and thawing.

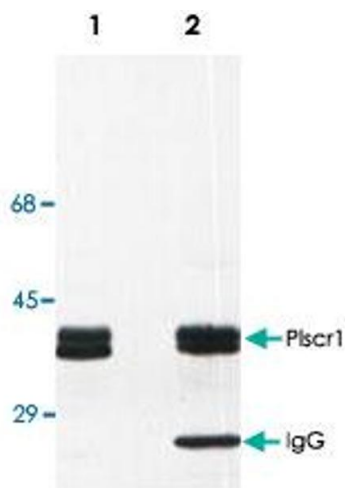
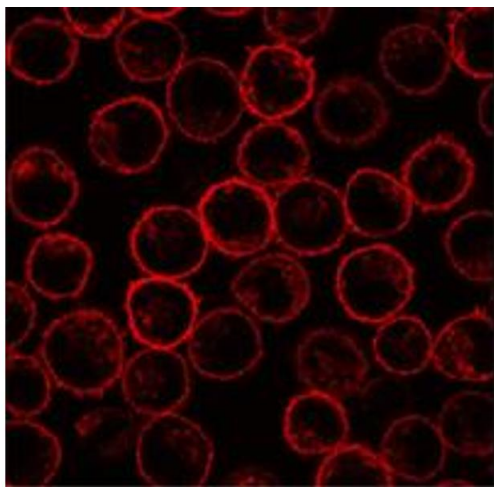


Image 1. Detection of Plscr1 in rat basophilic leukemia (RBL) cell line lysate (Lane 1) and in Plscr1 immunoprecipitate from RBL lysate (Lane 2). Plscr1 monoclonal antibody, clone 13A6 [TEC-23] was used both for immunoprecipitation and immunodetection.



Immunofluorescence

Image 2. Immunofluorescence staining of Plscr1 in rat basophilic leukemia (RBL) cell line using Plscr1 monoclonal antibody, clone 13A6 [TEC-23].