

Datasheet for ABIN5585871

anti-PMS2 antibody**1** Image[Go to Product page](#)

Overview

Quantity:	100 µL
Target:	PMS2
Reactivity:	Human
Host:	Rat
Clonality:	Polyclonal
Conjugate:	This PMS2 antibody is un-conjugated
Application:	Western Blotting (WB), Immunohistochemistry (IHC), Immunofluorescence (IF)

Product Details

Purpose:	Rabbit polyclonal antibody raised against synthetic peptide of PMS2.
Immunogen:	A synthetic peptide corresponding to PMS2.
Specificity:	PMS2 polyclonal antibody detects endogenous levels of PMS2 protein.
Cross-Reactivity:	Human

Target Details

Target:	PMS2
Alternative Name:	PMS2 (PMS2 Products)
Background:	Full Gene Name: PMS2 postmeiotic segregation increased 2 (S. cerevisiae) Synonyms: HNPCC4,PMS2CL,PMSL2
Gene ID:	5395

Target Details

Pathways: [DNA Damage Repair](#), [Production of Molecular Mediator of Immune Response](#)

Application Details

Application Notes: Western Blot (1:500-1:1000)
Immunohistochemistry (1:50-1:200)
Immunofluorescence (1:50-1:200)
The optimal working dilution should be determined by the end user.

Restrictions: For Research Use only

Handling

Format: Liquid

Concentration: 1 mg/mL

Buffer: In PBS, pH 7.2 (0.05 % sodium azide)

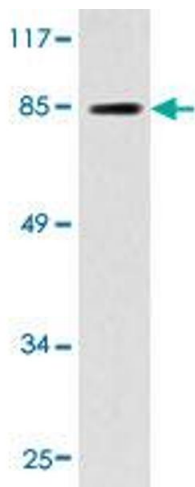
Preservative: Sodium azide

Precaution of Use: This product contains Sodium azide: a POISONOUS AND HAZARDOUS SUBSTANCE which should be handled by trained staff only.

Storage: 4 °C, -20 °C

Storage Comment: Store at 4°C. For long term storage store at -20°C.
Aliquot to avoid repeated freezing and thawing.

Images



Western Blotting

Image 1. Western blot analysis of HeLa cell extracts with PMS2 polyclonal antibody .