



[Go to Product page](#)

Datasheet for ABIN5585876
anti-PNMA2 antibody (AA 58-206)

2 Images

Overview

Quantity:	100 µL
Target:	PNMA2
Binding Specificity:	AA 58-206
Reactivity:	Human
Host:	Rabbit
Clonality:	Polyclonal
Conjugate:	This PNMA2 antibody is un-conjugated
Application:	Western Blotting (WB), Immunohistochemistry (Paraffin-embedded Sections) (IHC (p))

Product Details

Purpose:	Rabbit polyclonal antibody raised against partial recombinant human PNMA2.
Immunogen:	Recombinant protein corresponding to amino acids 58 - 206 of human PNMA2.
Sequence:	KQENANAVLL ELLEDTDVSA IPSEVQGGKGG VWKVIFKTPN QDTEFLERLN LFLEKEGQTV SGMFRALGQE GVSPATVPCI SPELLAHLG QAMAHAPQL LPMRYRKL RV FSGSAVP EESFEVWLEQ ATEIVKEWPV TEAEKKRWL
Isotype:	IgG
Cross-Reactivity:	Human

Target Details

Target:	PNMA2
---------	-------

Target Details

Alternative Name:	PNMA2 (PNMA2 Products)
Background:	Full Gene Name: paraneoplastic antigen MA2 Synonyms: KIAA0883,MA2,MM2,RGAG2
Gene ID:	10687

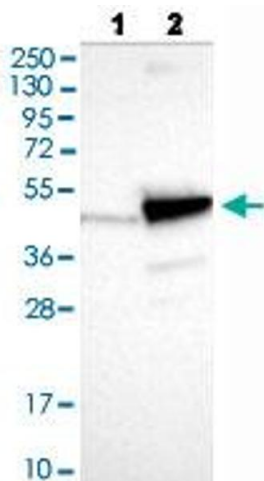
Application Details

Application Notes:	Immunohistochemistry (Formalin/PFA-fixed paraffin-embedded sections) (1:200 - 1:500) Western Blot (1:100 - 1:250) The optimal working dilution should be determined by the end user.
Restrictions:	For Research Use only

Handling

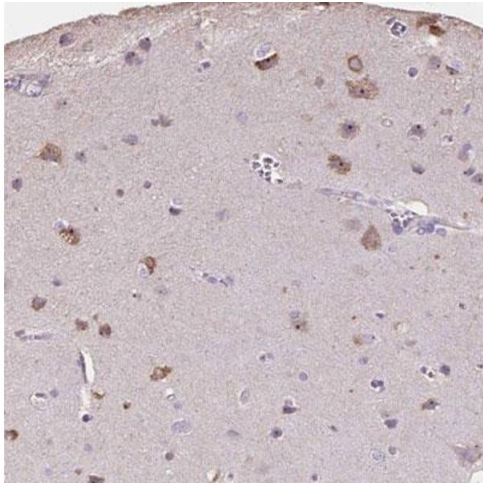
Format:	Liquid
Buffer:	In PBS, pH 7.2 (40 % glycerol, 0.02 % sodium azide).
Preservative:	Sodium azide
Precaution of Use:	This product contains Sodium azide: a POISONOUS AND HAZARDOUS SUBSTANCE which should be handled by trained staff only.
Storage:	4 °C,-20 °C
Storage Comment:	Store at 4°C. For long term storage store at -20°C. Aliquot to avoid repeated freezing and thawing.

Images



Western Blotting

Image 1. Western blot analysis of Lane 1: Negative control (vector only transfected HEK293T lysate), Lane 2: Over-expression lysate (Co-expressed with a C-terminal myc-DDK tag (~3.1 kDa) in mammalian HEK293T cells) with PNMA2 polyclonal antibody .



Immunohistochemistry

Image 2. Immunohistochemical staining (Formalin-fixed paraffin-embedded sections) of human cerebral cortex shows moderate cytoplasmic and nucleolar positivity in neuronal cells with PNMA2 polyclonal antibody .