

Datasheet for ABIN5585884
anti-Patatin-Like Phospholipase Domain Containing 7 (PNPLA7) antibody



[Go to Product page](#)

1 Image

Overview

Quantity:	100 µL
Target:	Patatin-Like Phospholipase Domain Containing 7 (PNPLA7)
Reactivity:	Human
Host:	Rabbit
Clonality:	Polyclonal
Conjugate:	Un-conjugated
Application:	Immunohistochemistry (Paraffin-embedded Sections) (IHC (p))

Product Details

Purpose:	Rabbit polyclonal antibody raised against recombinant PNPLA7.
Immunogen:	Recombinant protein corresponding to amino acids of human PNPLA7.
Sequence:	CEVG YQHGR T VFDI WGRSGV LEKMLRDQQG PSKKPASAVL TCPNASFTDL AEIVSRIEPA KPAMVDD ESD YQTEYEEELL DVPRDAYADF QSTSAQQGSD LEDESSLRHR HPSLAFPKLS E
Isotype:	IgG
Cross-Reactivity:	Human

Target Details

Target:	Patatin-Like Phospholipase Domain Containing 7 (PNPLA7)
Alternative Name:	PNPLA7 (PNPLA7 Products)
Background:	Full Gene Name: patatin-like phospholipase domain containing 7

Target Details

Synonyms: C9orf111,FLJ31318,FLJ43070,FLJ44279,NTE-R1,NTEL1,RP11-48C7.2

Gene ID: 375775

Application Details

Application Notes: Immunohistochemistry (1:50-1:200)
The optimal working dilution should be determined by the end user.

Restrictions: For Research Use only

Handling

Format: Liquid

Buffer: In PBS, pH 7.2 (40 % glycerol, 0.02 % sodium azide)

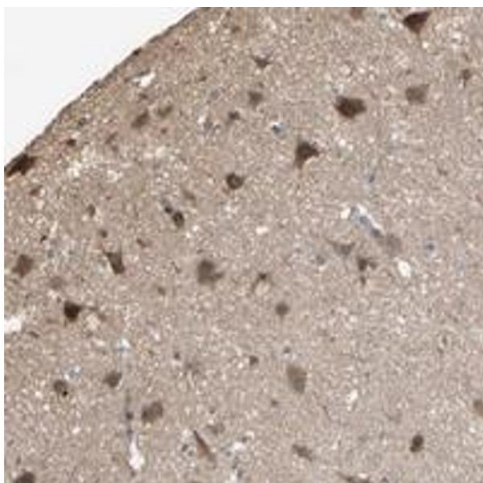
Preservative: Sodium azide

Precaution of Use: This product contains Sodium azide: a POISONOUS AND HAZARDOUS SUBSTANCE which should be handled by trained staff only.

Storage: 4 °C,-20 °C

Storage Comment: Store at 4°C. For long term storage store at -20°C.
Aliquot to avoid repeated freezing and thawing.

Images



Immunohistochemistry

Image 1. Immunohistochemical staining of human cerebral cortex with PNPLA7 polyclonal antibody shows strong cytoplasmic positivity in neuronal cells.