



[Go to Product page](#)

Datasheet for ABIN5585914
anti-POLA1 antibody

1 Image

Overview

Quantity:	100 µL
Target:	POLA1
Reactivity:	Human
Host:	Rat
Clonality:	Polyclonal
Conjugate:	This POLA1 antibody is un-conjugated
Application:	Western Blotting (WB)

Product Details

Purpose:	Rabbit polyclonal antibody raised against synthetic peptide of POLA1.
Immunogen:	A synthetic peptide corresponding to POLA1.
Specificity:	POLA1 polyclonal antibody detects endogenous levels of POLA1 protein.
Cross-Reactivity:	Human

Target Details

Target:	POLA1
Alternative Name:	POLA1 (POLA1 Products)
Background:	Full Gene Name: polymerase (DNA directed), alpha 1, catalytic subunit Synonyms: DKFZp686K1672,POLA,p180
Gene ID:	5422

Target Details

Pathways: [SARS-CoV-2 Protein Interactome](#)

Application Details

Application Notes: Western Blot (1:500-1:1000)
The optimal working dilution should be determined by the end user.

Restrictions: For Research Use only

Handling

Format: Liquid

Buffer: In PBS, pH 7.2 (0.09 % sodium azide)

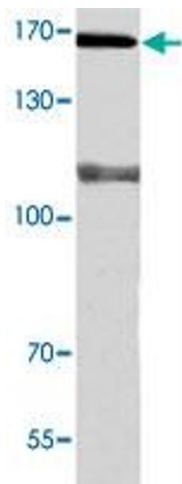
Preservative: Sodium azide

Precaution of Use: This product contains Sodium azide: a POISONOUS AND HAZARDOUS SUBSTANCE which should be handled by trained staff only.

Storage: 4 °C,-20 °C

Storage Comment: Store at 4°C. For long term storage store at -20°C.
Aliquot to avoid repeated freezing and thawing.

Images



Western Blotting

Image 1. Western blot analysis of A-549 cell extracts with POLA1 polyclonal antibody .