

Datasheet for ABIN5586005
anti-PPAPDC3 antibody (N-Term)[Go to Product page](#)

1 Image

Overview

Quantity:	100 µg
Target:	PPAPDC3
Binding Specificity:	N-Term
Reactivity:	Human, Mouse, Rat
Host:	Rabbit
Clonality:	Polyclonal
Conjugate:	This PPAPDC3 antibody is un-conjugated
Application:	ELISA, Western Blotting (WB)

Product Details

Purpose:	Rabbit polyclonal antibody raised against synthetic peptide of PPAPDC3.
Immunogen:	A synthetic peptide corresponding to 19 amino acids near N-terminus of human PPAPDC3.
Cross-Reactivity:	Human, Mouse, Rat

Target Details

Target:	PPAPDC3
Alternative Name:	PPAPDC3 (PPAPDC3 Products)
Background:	Full Gene Name: phosphatidic acid phosphatase type 2 domain containing 3 Synonyms: C9orf67, FLJ14662, KIAA0515, MGC12921, NET39, RP11-643E14.1
Gene ID:	84814

Target Details

Pathways: [Regulation of Muscle Cell Differentiation, Skeletal Muscle Fiber Development](#)

Application Details

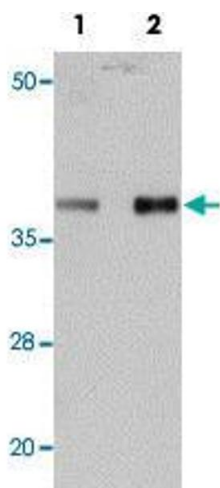
Application Notes: Western blot (1-2 µg/mL)
The optimal working dilution should be determined by the end user.

Restrictions: For Research Use only

Handling

Format:	Liquid
Concentration:	1 mg/mL
Buffer:	In PBS (0.02 % sodium azide)
Preservative:	Sodium azide
Precaution of Use:	This product contains Sodium azide: a POISONOUS AND HAZARDOUS SUBSTANCE which should be handled by trained staff only.
Storage:	4 °C,-20 °C
Storage Comment:	Store at 4°C for three months. For long term storage store at -20°C. Aliquot to avoid repeated freezing and thawing.

Images



Western Blotting

Image 1. Western blot analysis of mouse heart tissue with PPAPDC3 polyclonal antibody at (Lane 1) 1 and (Lane 2) 2 ug/mL dilution.