

Datasheet for ABIN5586030

anti-PPM1E antibody**2** Images[Go to Product page](#)

Overview

Quantity:	100 µL
Target:	PPM1E
Reactivity:	Human
Host:	Rabbit
Clonality:	Polyclonal
Conjugate:	This PPM1E antibody is un-conjugated
Application:	Immunohistochemistry (Paraffin-embedded Sections) (IHC (p)), Immunofluorescence (IF)

Product Details

Purpose:	Rabbit polyclonal antibody raised against recombinant PPM1E.
Immunogen:	Recombinant protein corresponding to amino acids of human PPM1E.
Sequence:	EVEGESLDLC LQQLYKYNCP SFLAAALARA TSDEVLQSDL SAHYIPKETD GTEGTVEIET VKLARSVFSK LHEI
Isotype:	IgG
Cross-Reactivity:	Human

Target Details

Target:	PPM1E
Alternative Name:	PPM1E (PPM1E Products)
Background:	Full Gene Name: protein phosphatase 1E (PP2C domain containing)

Target Details

Synonyms: DKFZp781F1422,KIAA1072,POPX1,PP2CH

Gene ID: 22843

Application Details

Application Notes: Immunohistochemistry (1:10-1:20)
Immunofluorescence (1-4 µg/mL)
The optimal working dilution should be determined by the end user.

Restrictions: For Research Use only

Handling

Format: Liquid

Buffer: In PBS, pH 7.2 (40 % glycerol, 0.02 % sodium azide)

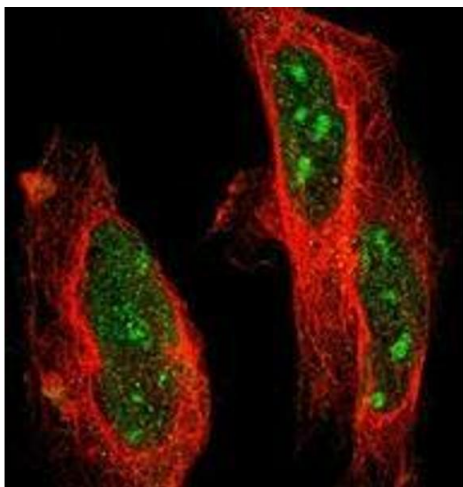
Preservative: Sodium azide

Precaution of Use: This product contains Sodium azide: a POISONOUS AND HAZARDOUS SUBSTANCE which should be handled by trained staff only.

Storage: 4 °C,-20 °C

Storage Comment: Store at 4°C. For long term storage store at -20°C.
Aliquot to avoid repeated freezing and thawing.

Images



Immunofluorescence

Image 1. Immunofluorescent staining of human cell line U-2 OS with PPM1E polyclonal antibody at 1-4 ug/mL dilution shows positivity in nucleus and nucleoli.



Immunohistochemistry

Image 2. Immunohistochemical staining of human cerebellum with PPM1E polyclonal antibody shows distinct nucleolar and nuclear positivity in Purkinje cells and in cells in molecular layer.