

Datasheet for ABIN5586042
anti-PPP1R10 antibody (AA 661-929)[Go to Product page](#)

1 Image

Overview

Quantity:	100 µg
Target:	PPP1R10
Binding Specificity:	AA 661-929
Reactivity:	Human
Host:	Rabbit
Clonality:	Polyclonal
Conjugate:	This PPP1R10 antibody is un-conjugated
Application:	Western Blotting (WB), ELISA

Product Details

Purpose:	Rabbit polyclonal antibody raised against partial recombinant PPP1R10.
Immunogen:	Recombinant protein corresponding to amino acids 661-929 of human PPP1R10.
Cross-Reactivity:	Human, Rat

Target Details

Target:	PPP1R10
Alternative Name:	PPP1R10 (PPP1R10 Products)
Background:	Full Gene Name: protein phosphatase 1, regulatory (inhibitor) subunit 10 Synonyms: CAT53,FB19,PNUTS,PP1R10
Gene ID:	5514

Target Details

Pathways: [Protein targeting to Nucleus](#)

Application Details

Application Notes: ELISA (1:10000-1:80000)
Western Blot (1:200-1:1000)
The optimal working dilution should be determined by the end user.

Restrictions: For Research Use only

Handling

Format: Liquid

Buffer: In buffer containing 0.02 % sodium azide

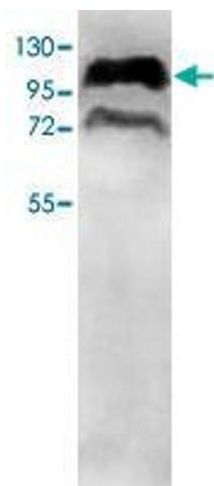
Preservative: Sodium azide

Precaution of Use: This product contains Sodium azide: a POISONOUS AND HAZARDOUS SUBSTANCE which should be handled by trained staff only.

Storage: 4 °C, -20 °C

Storage Comment: Store at 4°C for three months. For long term storage store at -20°C.
Aliquot to avoid repeated freezing and thawing.

Images



Western Blotting

Image 1. Western blot analysis of HepG2 cell lysate with PPP1R10 polyclonal antibody at 1 : 500 dilution.