



[Go to Product page](#)

Datasheet for ABIN5586058
anti-PPP1R26 antibody

2 Images

Overview

Quantity:	100 µL
Target:	PPP1R26
Reactivity:	Human
Host:	Rabbit
Clonality:	Polyclonal
Conjugate:	This PPP1R26 antibody is un-conjugated
Application:	Immunofluorescence (IF), Immunohistochemistry (Paraffin-embedded Sections) (IHC (p))

Product Details

Purpose:	Rabbit polyclonal antibody raised against recombinant PPP1R26.
Immunogen:	Recombinant protein corresponding to amino acids of human PPP1R26.
Sequence:	NEKRQHETQK CDGSVEKKPD TNENSAKSL LKSHQEPPTKV VHRQGLLG VQ KEFAFRKPPR LAKMNVQPRS LRSKVTTTQE NEGSTKPATP CRPSEAAQNK G
Isotype:	IgG
Cross-Reactivity:	Human

Target Details

Target:	PPP1R26
Alternative Name:	PPP1R26 (PPP1R26 Products)
Background:	Full Gene Name: protein phosphatase 1, regulatory subunit 26

Target Details

Synonyms: RP11-426A6.6,KIAA0649

Gene ID: 9858

Application Details

Application Notes: Immunohistochemistry (1:50-1:200)
Immunofluorescence (1-4 µg/mL)
The optimal working dilution should be determined by the end user.

Restrictions: For Research Use only

Handling

Format: Liquid

Buffer: In PBS, pH 7.2 (40 % glycerol, 0.02 % sodium azide)

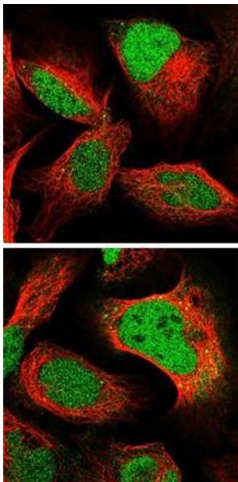
Preservative: Sodium azide

Precaution of Use: This product contains Sodium azide: a POISONOUS AND HAZARDOUS SUBSTANCE which should be handled by trained staff only.

Storage: 4 °C,-20 °C

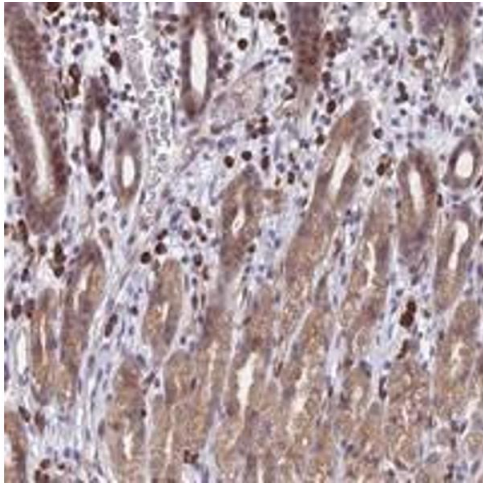
Storage Comment: Store at 4°C. For long term storage store at -20°C.
Aliquot to avoid repeated freezing and thawing.

Images



Immunofluorescence

Image 1. Immunofluorescent staining of human cell line U-2 OS with PPP1R26 polyclonal antibody at 1-4 µg/mL dilution shows positivity in nucleus.



Immunohistochemistry

Image 2. Immunohistochemical staining of human stomach with PPP1R26 polyclonal antibody shows moderate cytoplasmic positivity in glandular cells.