



[Go to Product page](#)

Datasheet for ABIN5586059
anti-PPP1R32 antibody

1 Image

Overview

Quantity:	100 µL
Target:	PPP1R32
Reactivity:	Human
Host:	Rabbit
Clonality:	Polyclonal
Conjugate:	This PPP1R32 antibody is un-conjugated
Application:	Immunohistochemistry (Paraffin-embedded Sections) (IHC (p))

Product Details

Purpose:	Rabbit polyclonal antibody raised against recombinant PPP1R32.
Immunogen:	Recombinant protein corresponding to amino acids of human PPP1R32.
Sequence:	TSSGYGREKP SAGPPTKEVR KVHFDTQEHG PQAITGLEPR EVPLLHQQQG QDPLERENFR HGPRFMTSEY NSKYLRDPLD QPDFLQKCSI GAKEGSGFTK QSHQ
Isotype:	IgG
Cross-Reactivity:	Human

Target Details

Target:	PPP1R32
Alternative Name:	PPP1R32 (PPP1R32 Products)
Background:	Full Gene Name: protein phosphatase 1, regulatory subunit 32

Target Details

Synonyms: C11orf66,IIIG9

Gene ID: 220004

Application Details

Application Notes: Immunohistochemistry (1:200-1:500)
The optimal working dilution should be determined by the end user.

Restrictions: For Research Use only

Handling

Format: Liquid

Buffer: In PBS, pH 7.2 (40 % glycerol, 0.02 % sodium azide)

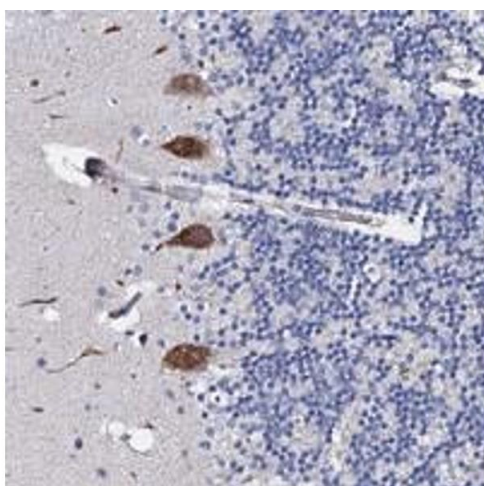
Preservative: Sodium azide

Precaution of Use: This product contains Sodium azide: a POISONOUS AND HAZARDOUS SUBSTANCE which should be handled by trained staff only.

Storage: 4 °C,-20 °C

Storage Comment: Store at 4°C. For long term storage store at -20°C.
Aliquot to avoid repeated freezing and thawing.

Images



Immunohistochemistry

Image 1. Immunohistochemical staining of human cerebellum with PPP1R32 polyclonal antibody shows strong cytoplasmic positivity in Purkinje cells.