

Datasheet for ABIN5586061
anti-PPP1R3F antibody[Go to Product page](#)

1 Image

Overview

Quantity:	100 µL
Target:	PPP1R3F
Reactivity:	Human
Host:	Rabbit
Clonality:	Polyclonal
Conjugate:	This PPP1R3F antibody is un-conjugated
Application:	Immunohistochemistry (Paraffin-embedded Sections) (IHC (p))

Product Details

Purpose:	Rabbit polyclonal antibody raised against recombinant PPP1R3F.
Immunogen:	Recombinant protein corresponding to amino acids of human PPP1R3F.
Sequence:	TDGGMSPSHP LGILTDRDLI LKWPGPERAL NSALAEIITL HYARLGRGVE LIKDTEDPDD EGEGEEGLSV TPSSPEGDSP KESPPEILSG ARSVVATMGD VWLP
Isotype:	IgG
Cross-Reactivity:	Human

Target Details

Target:	PPP1R3F
Alternative Name:	PPP1R3F (PPP1R3F Products)
Background:	Full Gene Name: protein phosphatase 1, regulatory (inhibitor) subunit 3F

Target Details

	Synonyms: Hb2E
Gene ID:	89801
Pathways:	Regulation of Carbohydrate Metabolic Process

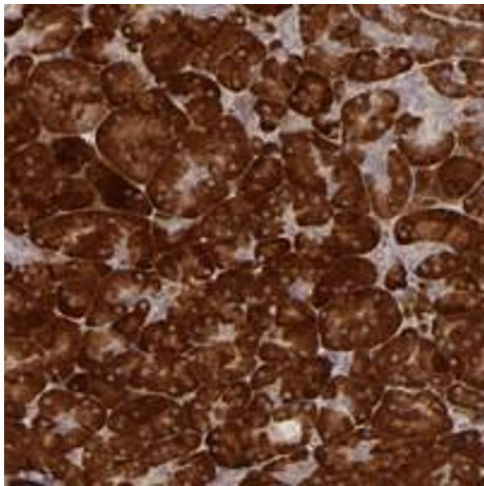
Application Details

Application Notes:	Immunohistochemistry (1:50-1:200) The optimal working dilution should be determined by the end user.
Restrictions:	For Research Use only

Handling

Format:	Liquid
Buffer:	In PBS, pH 7.2 (40 % glycerol, 0.02 % sodium azide)
Preservative:	Sodium azide
Precaution of Use:	This product contains Sodium azide: a POISONOUS AND HAZARDOUS SUBSTANCE which should be handled by trained staff only.
Storage:	4 °C,-20 °C
Storage Comment:	Store at 4°C. For long term storage store at -20°C. Aliquot to avoid repeated freezing and thawing.

Images



Immunohistochemistry

Image 1. Immunohistochemical staining of human pancreas with PPP1R3F polyclonal antibody shows strong cytoplasmic positivity in exocrine glands.