



Datasheet for ABIN5586081  
**anti-PPP4R4 antibody**



[Go to Product page](#)

3 Images

Overview

Quantity:	100 µL
Target:	PPP4R4
Reactivity:	Human
Host:	Rabbit
Clonality:	Polyclonal
Conjugate:	This PPP4R4 antibody is un-conjugated
Application:	Western Blotting (WB), Immunohistochemistry (Paraffin-embedded Sections) (IHC (p)), Immunofluorescence (IF)

Product Details

Purpose:	Rabbit polyclonal antibody raised against recombinant PPP4R4.
Immunogen:	Recombinant protein corresponding to amino acids of human PPP4R4.
Sequence:	SLFGYMEDLQ ELTIIERPVR RSLKTPEEIE RLTVDEDLSD IERAVYLLSA QGDVQGTSVI ANLPFLMRQN PTETLRRVLP KVR
Isotype:	IgG
Cross-Reactivity:	Human

Target Details

Target:	PPP4R4
Alternative Name:	PPP4R4 ( <a href="#">PPP4R4 Products</a> )

## Target Details

---

Background:	Full Gene Name: protein phosphatase 4, regulatory subunit 4 Synonyms: KIAA1622,PP4R4
Gene ID:	57718
UniProt:	<a href="#">Q6NUP7</a>

## Application Details

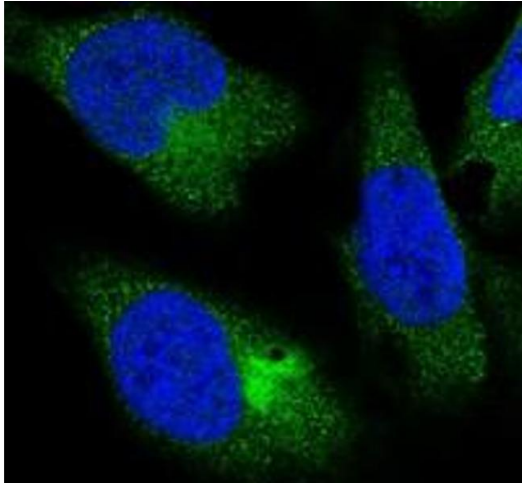
---

Application Notes:	Immunohistochemistry (1:200-1:500) Western Blot (1:250-1:500) Immunofluorescence (1-4 µg/mL) The optimal working dilution should be determined by the end user.
Restrictions:	For Research Use only

## Handling

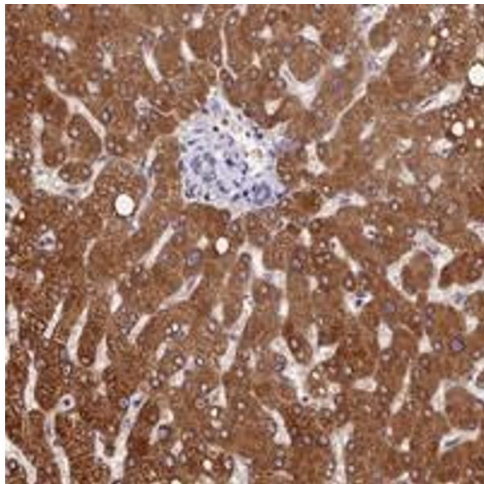
---

Format:	Liquid
Buffer:	In PBS, pH 7.2 (40 % glycerol, 0.02 % sodium azide)
Preservative:	Sodium azide
Precaution of Use:	This product contains Sodium azide: a POISONOUS AND HAZARDOUS SUBSTANCE which should be handled by trained staff only.
Storage:	4 °C,-20 °C
Storage Comment:	Store at 4°C. For long term storage store at -20°C. Aliquot to avoid repeated freezing and thawing.



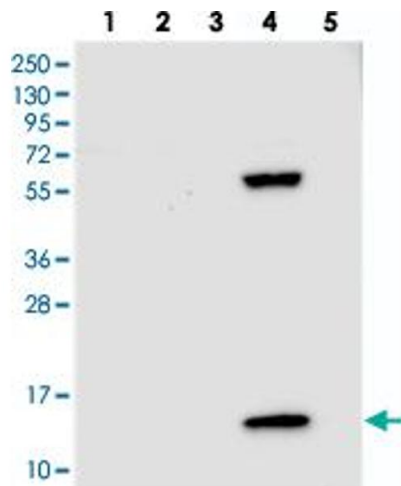
### Immunofluorescence

**Image 1.** Immunofluorescent staining of human cell line U-2 OS with PPP4R4 polyclonal antibody at 1-4 ug/mL dilution shows positivity in cytoplasm.



### Immunohistochemistry

**Image 2.** Immunohistochemical staining of human liver with PPP4R4 polyclonal antibody shows strong cytoplasmic positivity in hepatocytes at 1:200-1:500 dilution.



### Western Blotting

**Image 3.** Western blot analysis of Lane 1: RT-4, Lane 2: U-251 MG, Lane 3: Human Plasma, Lane 4: Liver, Lane 5: Tonsil with PPP4R4 polyclonal antibody at 1:250-1:500 dilution.