

Datasheet for ABIN5586104  
**anti-PRDM16 antibody (C-Term)**[Go to Product page](#)

## 2 Images

## Overview

Quantity:	100 µg
Target:	PRDM16
Binding Specificity:	C-Term
Reactivity:	Human, Mouse, Rat
Host:	Rabbit
Clonality:	Polyclonal
Conjugate:	This PRDM16 antibody is un-conjugated
Application:	ELISA, Western Blotting (WB), Immunohistochemistry (IHC)

## Product Details

Purpose:	Rabbit polyclonal antibody raised against synthetic peptide of PRDM16.
Immunogen:	A synthetic peptide corresponding to 17 amino acids near C-terminus of human PRDM16.
Cross-Reactivity:	Human, Mouse, Rat

## Target Details

Target:	PRDM16
Alternative Name:	PRDM16 ( <a href="#">PRDM16 Products</a> )
Background:	Full Gene Name: PR domain containing 16 Synonyms: KIAA1675,MEL1,MGC166915,PFM13
Gene ID:	63976

## Target Details

Pathways: [Stem Cell Maintenance](#), [Brown Fat Cell Differentiation](#)

## Application Details

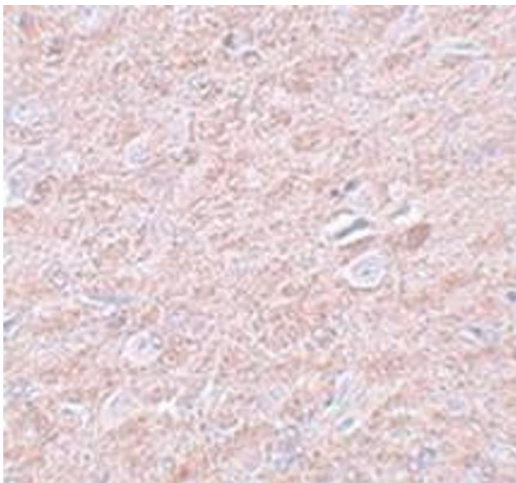
Application Notes: Western blot (1-2 µg/mL)  
The optimal working dilution should be determined by the end user.

Restrictions: For Research Use only

## Handling

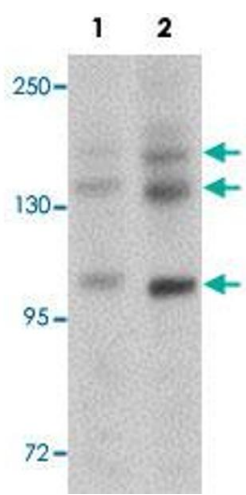
Format:	Liquid
Concentration:	1 mg/mL
Buffer:	In PBS (0.02 % sodium azide)
Preservative:	Sodium azide
Precaution of Use:	This product contains Sodium azide: a POISONOUS AND HAZARDOUS SUBSTANCE which should be handled by trained staff only.
Storage:	4 °C
Storage Comment:	Store at 4°C for up to one year. Aliquot to avoid repeated freezing and thawing.

## Images



### Immunohistochemistry

**Image 1.** Immunohistochemical staining of rat brain tissue with PRDM16 polyclonal antibody at 25 µg/mL dilution.



Western Blotting

**Image 2.** Western blot analysis of rat brain tissue with PRDM16 polyclonal antibody at (Lane 1) 1 and (Lane 2) 2 ug/mL dilution.