



[Go to Product page](#)

Datasheet for ABIN5586112  
**anti-Peroxiredoxin 6 antibody**

2 Images

### Overview

Quantity:	100 µg
Target:	Peroxiredoxin 6 (PRDX6)
Reactivity:	Human
Host:	Mouse
Clonality:	Monoclonal
Conjugate:	This Peroxiredoxin 6 antibody is un-conjugated
Application:	Western Blotting (WB), Immunohistochemistry (IHC), ELISA

### Product Details

Purpose:	Mouse monoclonal antibody raised against full length recombinant PRDX6.
Immunogen:	Recombinant protein corresponding to full length human PRDX6.
Clone:	36
Isotype:	IgG1
Cross-Reactivity:	Human

### Target Details

Target:	Peroxiredoxin 6 (PRDX6)
Alternative Name:	PRDX6 ( <a href="#">PRDX6 Products</a> )
Background:	Full Gene Name: peroxiredoxin 6 Synonyms: 1-Cys,AOP2,KIAA0106,MGC46173,NSGPx,PRX,aiPLA2,p29

## Target Details

---

Gene ID: 9588

NCBI Accession: [NM\\_004905](#)

## Application Details

---

Application Notes: Western blot (1:1000)  
The optimal working dilution should be determined by the end user.

Restrictions: For Research Use only

## Handling

---

Format: Liquid

Buffer: In Citrate-Tris-HCl buffer, pH 7.0 (0.02 % Proclin 300)

Preservative: ProClin

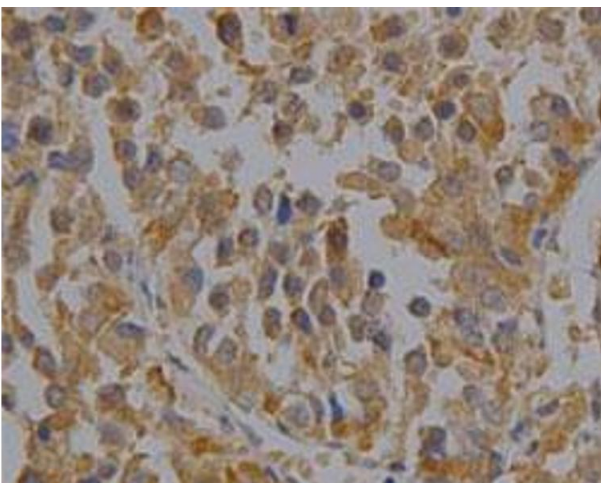
Precaution of Use: This product contains ProClin: a POISONOUS AND HAZARDOUS SUBSTANCE which should be handled by trained staff only.

Storage: 4 °C, -20 °C

Storage Comment: Store at 4°C. For long term storage store at -20°C.  
Aliquot to avoid repeated freezing and thawing.

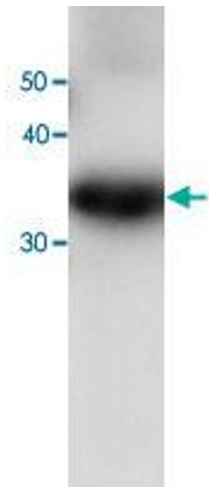
## Images

---



### Immunohistochemistry

**Image 1.** Immunohistochemical staining of human liver cancer tissue section with PRDX6 monoclonal antibody, clone 36 at 1:100 dilution.



### Western Blotting

**Image 2.** Western blot analysis of recombinant PRDX6 protein with PRDX6 monoclonal antibody, clone 36 at 1:1000 dilution.