



Datasheet for ABIN5586140
anti-PRKAB1 antibody (Ser182)



[Go to Product page](#)

2 Images

Overview

Quantity:	100 µg
Target:	PRKAB1
Binding Specificity:	Ser182
Reactivity:	Human, Mouse, Rat
Host:	Rabbit
Clonality:	Polyclonal
Conjugate:	This PRKAB1 antibody is un-conjugated
Application:	Western Blotting (WB), ELISA, Immunohistochemistry (Paraffin-embedded Sections) (IHC (p))

Product Details

Purpose:	Rabbit polyclonal antibody raised against synthetic peptide of PRKAB1.
Immunogen:	A synthetic peptide corresponding to residues surrounding S182 of human PRKAB1.
Specificity:	This antibody detects endogenous levels of total PRKAB1 protein.
Cross-Reactivity:	Human, Mouse, Rat

Target Details

Target:	PRKAB1
Alternative Name:	PRKAB1 (PRKAB1 Products)
Background:	Full Gene Name: protein kinase, AMP-activated, beta 1 non-catalytic subunit Synonyms: AMPK,HAMPKb,MGC17785

Target Details

Gene ID: 5564

Pathways: [AMPK Signaling, Warburg Effect](#)

Application Details

Application Notes: Western Blot (1:500-1:1000)
Immunohistochemistry (1:50-1:100)
ELISA (1:20000)
The optimal working dilution should be determined by the end user.

Restrictions: For Research Use only

Handling

Format: Liquid

Buffer: In 20 mM PBS, 0.15 M NaCl, pH 7.2 (0.01 % sodium azide)

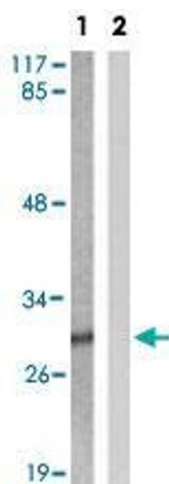
Preservative: Sodium azide

Precaution of Use: This product contains Sodium azide: a POISONOUS AND HAZARDOUS SUBSTANCE which should be handled by trained staff only.

Storage: 4 °C, -20 °C

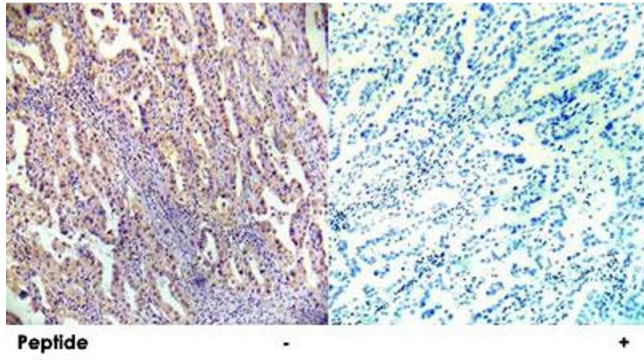
Storage Comment: Store at 4°C for three months. For long term storage store at -20°C.
Aliquot to avoid repeated freezing and thawing.

Images



Western Blotting

Image 1. Western blot analysis of extracts from COS-7 cell.
Lane 1 : Using PRKAB1 polyclonal antibody . Lane 2 : Using the same antibody preincubated with synthesized peptide.



Immunohistochemistry

Image 2. Immunohistochemical analysis of paraffin-embedded human lung carcinoma tissue using PRKAB1 polyclonal antibody .