

Datasheet for ABIN5586238

anti-Prokineticin Receptor 2 antibody (N-Term)[Go to Product page](#)**1** Image

Overview

Quantity:	50 µg
Target:	Prokineticin Receptor 2 (PROKR2)
Binding Specificity:	N-Term
Reactivity:	Human, Monkey
Host:	Rabbit
Clonality:	Polyclonal
Conjugate:	This Prokineticin Receptor 2 antibody is un-conjugated
Application:	Immunohistochemistry (Paraffin-embedded Sections) (IHC (p))

Product Details

Purpose:	Rabbit polyclonal antibody raised against synthetic peptide of PROKR2.
Immunogen:	A synthetic peptide corresponding to 15 amino acids at N-terminus of human PROKR2.
Specificity:	BLAST analysis of the peptide immunogen showed no homology with other human proteins.
Cross-Reactivity:	Human, Monkey
Cross-Reactivity (Details):	BLAST analysis of the peptide immunogen showed no homology with other human proteins.

Target Details

Target:	Prokineticin Receptor 2 (PROKR2)
Alternative Name:	PROKR2 (PROKR2 Products)
Background:	Full Gene Name: prokineticin receptor 2

Target Details

Synonyms: GPR73L1,GPR73b,GPRg2,KAL3,PKR2,dJ680N4.3

Gene ID: 128674

Pathways: [Hedgehog Signaling](#), [EGFR Signaling Pathway](#), [Neurotrophin Signaling Pathway](#), [Myometrial Relaxation and Contraction](#), [G-protein mediated Events](#), [Interaction of EGFR with phospholipase C-gamma](#)

Application Details

Application Notes: Immunohistochemistry (Formalin/PFA-fixed paraffin-embedded sections) (5 µg/mL)
The optimal working dilution should be determined by the end user.

Restrictions: For Research Use only

Handling

Format: Liquid

Buffer: In PBS (0.09 % sodium azide)

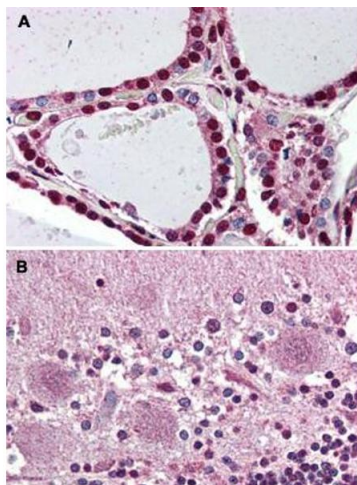
Preservative: Sodium azide

Precaution of Use: This product contains Sodium azide: a POISONOUS AND HAZARDOUS SUBSTANCE which should be handled by trained staff only.

Storage: 4 °C,-80 °C

Storage Comment: Store at 4°C. For long term storage store at -80°C.
Aliquot to avoid repeated freezing and thawing.

Images



Immunohistochemistry

Image 1. Immunohistochemical staining of human thyroid (A) and human brain, cerebellum (B) with PROKR2 polyclonal antibody . Immunohistochemistry of formalin-fixed, paraffin-embedded tissue after heat-induced antigen retrieval.