

Datasheet for ABIN5586261  
**anti-PRPS1 antibody (N-Term)**[Go to Product page](#)

## 2 Images

## Overview

Quantity:	400 µL
Target:	PRPS1
Binding Specificity:	N-Term
Reactivity:	Human, Mouse
Host:	Rabbit
Clonality:	Polyclonal
Conjugate:	This PRPS1 antibody is un-conjugated
Application:	Western Blotting (WB), ELISA

## Product Details

Purpose:	Rabbit polyclonal antibody raised against synthetic peptide of PRPS1/2/3.
Immunogen:	A synthetic peptide (conjugated with KLH) corresponding to N-terminus of human PRPS1/2/3.
Cross-Reactivity:	Human, Mouse

## Target Details

Target:	PRPS1
Alternative Name:	PRPS1 ( <a href="#">PRPS1 Products</a> )
Background:	Full Gene Name: phosphoribosyl pyrophosphate synthetase 1 Synonyms: ARTS,CMTX5,KIAA0967,PPRibP,PRSI
Gene ID:	5631, 5634, 221823

## Target Details

Pathways: [Ribonucleoside Biosynthetic Process](#)

## Application Details

Application Notes: Western Blot (1:1000)  
The optimal working dilution should be determined by the end user.

Restrictions: For Research Use only

## Handling

Format: Liquid

Buffer: In PBS (0.09 % sodium azide)

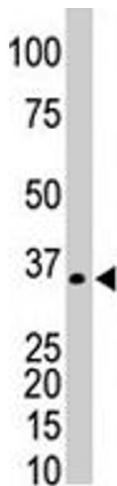
Preservative: Sodium azide

Precaution of Use: This product contains Sodium azide: a POISONOUS AND HAZARDOUS SUBSTANCE which should be handled by trained staff only.

Storage: 4 °C,-20 °C

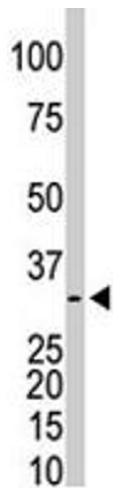
Storage Comment: Store at 4°C. For long term storage store at -20°C.  
Aliquot to avoid repeated freezing and thawing.

## Images



### Western Blotting

**Image 1.** Western Blot (Tissue lysate) analysis of mouse kidney tissue lysate with PRPS1/PRPS2/PRPS3 polyclonal antibody .



Western Blotting

**Image 2.** Western Blot (Cell lysate) analysis of HeLa cell lysate with PRPS1/PRPS2/PRPS3 polyclonal antibody .