

Datasheet for ABIN5586262

**anti-PRPS1L1 antibody**[Go to Product page](#)**1** Image

## Overview

Quantity:	100 µg
Target:	PRPS1L1
Reactivity:	Human
Host:	Mouse
Clonality:	Monoclonal
Conjugate:	This PRPS1L1 antibody is un-conjugated
Application:	Western Blotting (WB), ELISA

## Product Details

Purpose:	Mouse monoclonal antibody raised against full length recombinant PRPS1L1.
Immunogen:	Recombinant protein corresponding to full length human PRPS1L1.
Clone:	3
Isotype:	IgG1
Specificity:	It can expression in SW480 whole cell lysate.
Cross-Reactivity:	Human

## Target Details

Target:	PRPS1L1
Alternative Name:	PRPS1L1 ( <a href="#">PRPS1L1 Products</a> )
Background:	Full Gene Name: phosphoribosyl pyrophosphate synthetase 1-like 1

Target Details

	Synonyms: PRPS1,PRPS3,PRPSL,PRS-III
Gene ID:	221823
NCBI Accession:	<a href="#">NM_175886</a>

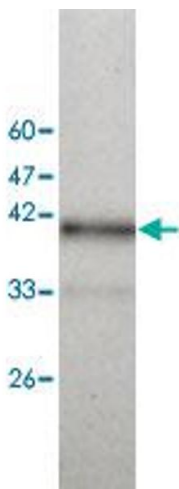
Application Details

Application Notes:	Western blot (1:1000) The optimal working dilution should be determined by the end user.
Restrictions:	For Research Use only

Handling

Format:	Liquid
Buffer:	In Citrate-Tris-HCl buffer, pH 7.0 (0.02 % Proclin 300)
Preservative:	ProClin
Precaution of Use:	This product contains ProClin: a POISONOUS AND HAZARDOUS SUBSTANCE which should be handled by trained staff only.
Storage:	4 °C,-20 °C
Storage Comment:	Store at 4°C. For long term storage store at -20°C. Aliquot to avoid repeated freezing and thawing.

Images



**Western Blotting**

**Image 1.** Western blot analysis of SW480 whole cell lystae with PRPS1L1 monoclonal antibody, clone 3 at 1:1000 dilution.