

Datasheet for ABIN5586279
anti-PRTFDC1 antibody (Internal Region)[Go to Product page](#)

1 Image

Overview

Quantity:	100 µg
Target:	PRTFDC1
Binding Specificity:	Internal Region
Reactivity:	Human, Rat, Mouse
Host:	Rabbit
Clonality:	Polyclonal
Conjugate:	This PRTFDC1 antibody is un-conjugated
Application:	Western Blotting (WB), ELISA

Product Details

Purpose:	Rabbit polyclonal antibody raised against synthetic peptide of PRTFDC1.
Immunogen:	A synthetic peptide corresponding to internal region 14 amino acids of human PRTFDC1.
Cross-Reactivity:	Human, Mouse, Rat

Target Details

Target:	PRTFDC1
Alternative Name:	PRTFDC1 (PRTFDC1 Products)
Background:	Full Gene Name: phosphoribosyl transferase domain containing 1 Synonyms: FLJ11888, HHGP
Gene ID:	56952

Target Details

Pathways: [Ribonucleoside Biosynthetic Process](#)

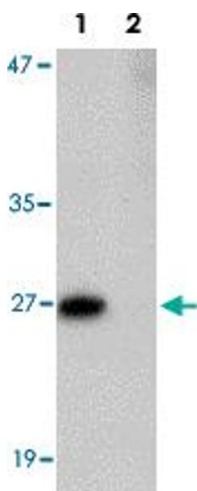
Application Details

Application Notes:	Western Blot (0.5-1 µg/mL) The optimal working dilution should be determined by the end user.
Restrictions:	For Research Use only

Handling

Format:	Liquid
Buffer:	In PBS (0.02 % sodium azide)
Preservative:	Sodium azide
Precaution of Use:	This product contains Sodium azide: a POISONOUS AND HAZARDOUS SUBSTANCE which should be handled by trained staff only.
Storage:	4 °C,-20 °C
Storage Comment:	Store at 4°C for three months. For long term storage store at -20°C. Aliquot to avoid repeated freezing and thawing.

Images



Western Blotting

Image 1. Western blot analysis of PRTFDC1 in human brain tissue lysate with PRTFDC1 polyclonal antibody at 1 ug/mL in the (Lane 1) absence and (Lane 2) presence of blocking peptide.