

Datasheet for ABIN5586296

anti-PSD antibody**2** Images[Go to Product page](#)

Overview

Quantity:	100 µg
Target:	PSD
Reactivity:	Rat
Host:	Mouse
Clonality:	Monoclonal
Conjugate:	This PSD antibody is un-conjugated
Application:	Western Blotting (WB), Immunohistochemistry (IHC), Immunofluorescence (IF)

Product Details

Purpose:	Mouse monoclonal antibody raised against recombinant Psd.
Immunogen:	Recombinant protein corresponding to rat Psd.
Clone:	7E3
Isotype:	IgG2a
Specificity:	Detects a ~100KDa protein corresponding to the molecular mass of PSD-95 on SDS PAGE immunoblots. Additional cross-reactive bands are detected at ~80KDa and ~50KDa in rat and mouse samples.
Cross-Reactivity:	Cow, Mouse, Rat

Target Details

Target:	PSD
---------	-----

Target Details

Alternative Name:	Psd (PSD Products)
Background:	Full Gene Name: pleckstrin and Sec7 domain containing Synonyms: EFA6
Gene ID:	171381

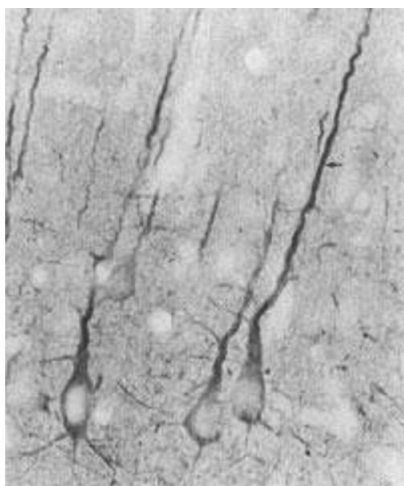
Application Details

Application Notes:	Western Blot (1 µg/mL) The optimal working dilution should be determined by the end user.
Restrictions:	For Research Use only

Handling

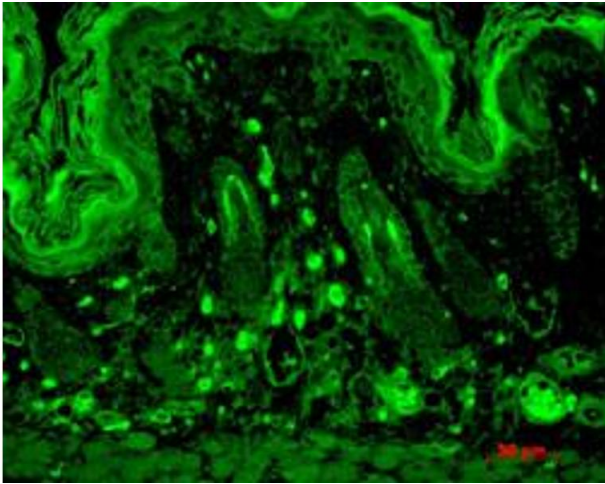
Format:	Liquid
Buffer:	In PBS, pH 7.4 (50 % glycerol, 0.09 % sodium azide)
Preservative:	Sodium azide
Precaution of Use:	This product contains Sodium azide: a POISONOUS AND HAZARDOUS SUBSTANCE which should be handled by trained staff only.
Storage:	-20 °C
Storage Comment:	Store at -20°C. Aliquot to avoid repeated freezing and thawing.

Images



Immunohistochemistry

Image 1. Immunohistochemical localization of Psd in rat neocortex with Psd monoclonal antibody, clone 7E3 .



Immunofluorescence

Image 2. Immunofluorescence staining from mouse backskin- basal, hair follicle and dermal with Psd monoclonal antibody, clone 7E3 .