



[Go to Product page](#)

Datasheet for ABIN5586333  
**anti-PSMG3 antibody**

2 Images

### Overview

Quantity:	100 µL
Target:	PSMG3
Reactivity:	Human
Host:	Rabbit
Clonality:	Polyclonal
Conjugate:	This PSMG3 antibody is un-conjugated
Application:	Western Blotting (WB), Immunohistochemistry (Paraffin-embedded Sections) (IHC (p))

### Product Details

Purpose:	Rabbit polyclonal antibody raised against recombinant PSMG3.
Immunogen:	Recombinant protein corresponding to amino acids of human PSMG3.
Sequence:	VVVTQFGKMG TLVSLEPSSV ASDVSKPVLTKVLLGQDEP LIHVFAKNLV AFVSQEAGNR AVLLAVAVKD KSMEGLKALR EVIRVCQ
Isotype:	IgG
Cross-Reactivity:	Human

### Target Details

Target:	PSMG3
Alternative Name:	PSMG3 ( <a href="#">PSMG3 Products</a> )
Background:	Full Gene Name: proteasome (prosome, macropain) assembly chaperone 3

## Target Details

Synonyms: C7orf48,MGC10911,PAC3

Gene ID: 84262

Pathways: [Monocarboxylic Acid Catabolic Process](#)

## Application Details

Application Notes: Immunohistochemistry (1:50-1:200)  
Western Blot (1:250-1:500)  
The optimal working dilution should be determined by the end user.

Restrictions: For Research Use only

## Handling

Format: Liquid

Buffer: In PBS, pH 7.2 (40 % glycerol, 0.02 % sodium azide)

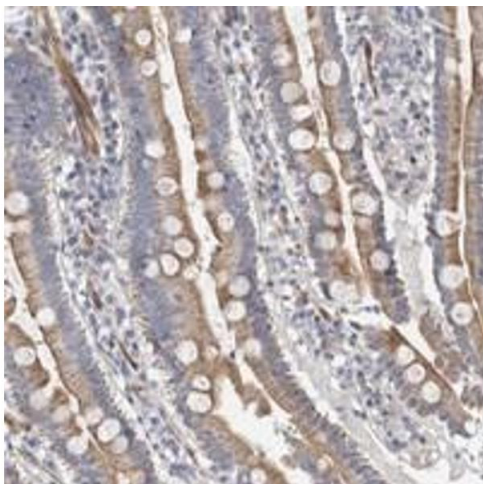
Preservative: Sodium azide

Precaution of Use: This product contains Sodium azide: a POISONOUS AND HAZARDOUS SUBSTANCE which should be handled by trained staff only.

Storage: 4 °C,-20 °C

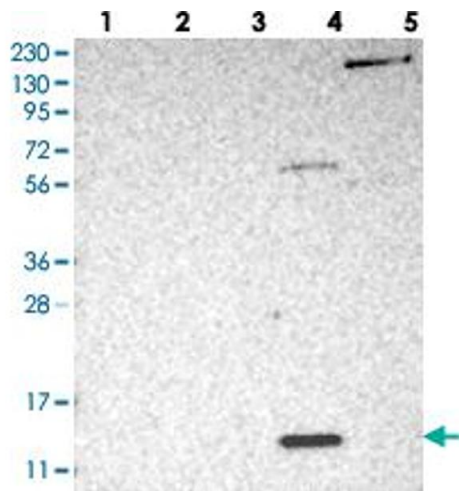
Storage Comment: Store at 4°C. For long term storage store at -20°C.  
Aliquot to avoid repeated freezing and thawing.

## Images



### Immunohistochemistry

**Image 1.** Immunohistochemical staining of human duodenum with PSMG3 polyclonal antibody shows cytoplasmic positivity in glandular cells.



### Western Blotting

**Image 2.** Western blot analysis of Lane 1: RT-4, Lane 2: U-251 MG, Lane 3: Human Plasma, Lane 4: Liver, Lane 5: Tonsil with PSMG3 polyclonal antibody .