

Datasheet for ABIN5586399

**anti-PTGFR antibody (2nd Cytoplasmic Domain)**[Go to Product page](#)**1** Image

## Overview

Quantity:	50 µg
Target:	PTGFR
Binding Specificity:	2nd Cytoplasmic Domain
Reactivity:	Human, Dog, Horse, Rabbit, Pig, Gorilla
Host:	Rabbit
Clonality:	Polyclonal
Conjugate:	This PTGFR antibody is un-conjugated
Application:	Immunohistochemistry (Paraffin-embedded Sections) (IHC (p))

## Product Details

Purpose:	Rabbit polyclonal antibody raised against synthetic peptide of PTGFR.
Immunogen:	A synthetic peptide corresponding to 16 amino acids at 2nd cytoplasmic domain of human PTGFR.
Specificity:	BLAST analysis of the peptide immunogen showed no homology with other human proteins.
Cross-Reactivity:	Dog, Gorilla, Horse, Human, Pig, Rabbit
Cross-Reactivity (Details):	BLAST analysis of the peptide immunogen showed no homology with other human proteins.

## Target Details

Target:	PTGFR
Alternative Name:	PTGFR ( <a href="#">PTGFR Products</a> )

## Target Details

Background: Full Gene Name: prostaglandin F receptor (FP)  
Synonyms: FP,MGC120498,MGC46203

Gene ID: 5737

## Application Details

Application Notes: Immunohistochemistry (Formalin/PFA-fixed paraffin-embedded sections) (7-11 µg/mL)  
The optimal working dilution should be determined by the end user.

Restrictions: For Research Use only

## Handling

Format: Liquid

Buffer: In PBS (0.09 % sodium azide)

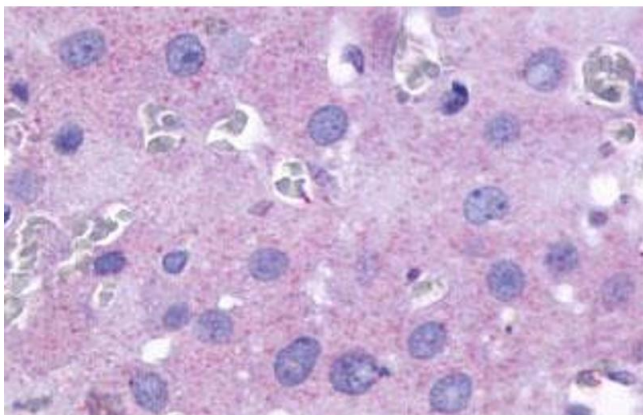
Preservative: Sodium azide

Precaution of Use: This product contains Sodium azide: a POISONOUS AND HAZARDOUS SUBSTANCE which should be handled by trained staff only.

Storage: 4 °C,-80 °C

Storage Comment: Store at 4°C. For long term storage store at -80°C.  
Aliquot to avoid repeated freezing and thawing.

## Images



### Immunohistochemistry

**Image 1.** Immunohistochemical (Formalin/PFA-fixed paraffin-embedded sections) staining in human ovary with PTGFR polyclonal antibody . Immunohistochemistry of formalin-fixed, paraffin-embedded tissue after heat-induced antigen retrieval.