

Datasheet for ABIN5586436

anti-PTH2R antibody (1st Extracellular Domain)[Go to Product page](#)**1** Image

Overview

Quantity:	50 µg
Target:	PTH2R
Binding Specificity:	1st Extracellular Domain
Reactivity:	Human
Host:	Rabbit
Clonality:	Polyclonal
Conjugate:	This PTH2R antibody is un-conjugated
Application:	Immunohistochemistry (Paraffin-embedded Sections) (IHC (p))

Product Details

Purpose:	Rabbit polyclonal antibody raised against synthetic peptide of PTH2R.
Immunogen:	A synthetic peptide corresponding to 20 amino acids at 1st extracellular domain of human PTH2R.
Specificity:	BLAST analysis of the peptide immunogen showed no homology with other human proteins.
Cross-Reactivity:	Human
Cross-Reactivity (Details):	BLAST analysis of the peptide immunogen showed no homology with other human proteins.

Target Details

Target:	PTH2R
Alternative Name:	PTH2R (PTH2R Products)

Target Details

Background: Full Gene Name: parathyroid hormone 2 receptor
Synonyms: PTHR2

Gene ID: 5746

Pathways: [cAMP Metabolic Process](#)

Application Details

Application Notes: Immunohistochemistry (Formalin/PFA-fixed paraffin-embedded sections) (9 µg/mL)
The optimal working dilution should be determined by the end user.

Restrictions: For Research Use only

Handling

Format: Liquid

Buffer: In PBS (0.09 % sodium azide)

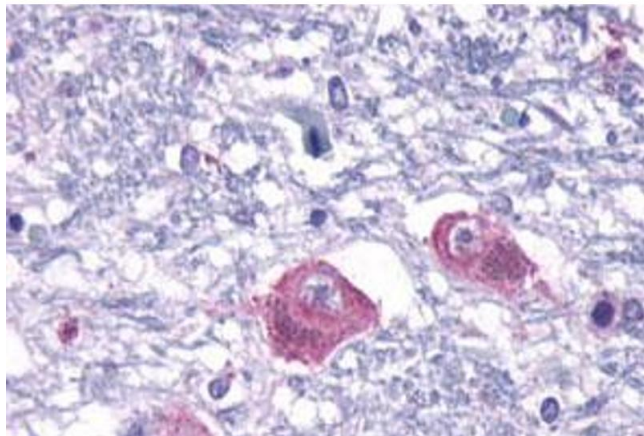
Preservative: Sodium azide

Precaution of Use: This product contains Sodium azide: a POISONOUS AND HAZARDOUS SUBSTANCE which should be handled by trained staff only.

Storage: 4 °C, -80 °C

Storage Comment: Store at 4°C. For long term storage store at -80°C.
Aliquot to avoid repeated freezing and thawing.

Images



Immunohistochemistry

Image 1. Immunohistochemical (Formalin/PFA-fixed paraffin-embedded sections) staining in human brain, neurons and glia with PTH2R polyclonal antibody . Immunohistochemistry of formalin-fixed, paraffin-embedded tissue after heat-induced antigen retrieval.