

Datasheet for ABIN5586473
anti-PTP4A3 antibody (AA 161-166)[Go to Product page](#)

1 Image

Overview

Quantity:	100 µg
Target:	PTP4A3
Binding Specificity:	AA 161-166
Reactivity:	Human, Mouse
Host:	Rabbit
Clonality:	Polyclonal
Conjugate:	This PTP4A3 antibody is un-conjugated
Application:	Western Blotting (WB)

Product Details

Purpose:	Rabbit polyclonal antibody raised against synthetic peptide of PTP4A3.
Immunogen:	A synthetic peptide corresponding to amino acids 161-166 of human PTP4A3.
Sequence:	K-D-P-H-T
Cross-Reactivity:	Human, Mouse

Target Details

Target:	PTP4A3
Alternative Name:	PTP4A3 (PTP4A3 Products)
Background:	Full Gene Name: protein tyrosine phosphatase type IVA, member 3 Synonyms: PRL-3,PRL-R,PRL3

Target Details

Gene ID: 11156

Application Details

Application Notes: Western Blot (1:500-1:1000)
The optimal working dilution should be determined by the end user.

Restrictions: For Research Use only

Handling

Format: Liquid

Concentration: 1 mg/mL

Buffer: In PBS, 150 mM NaCl, pH 7.4 (50 % glycerol, 0.02 % sodium azide)

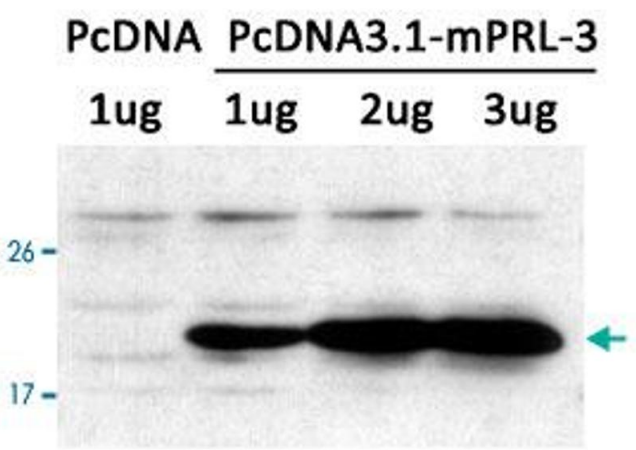
Preservative: Sodium azide

Precaution of Use: This product contains Sodium azide: a POISONOUS AND HAZARDOUS SUBSTANCE which should be handled by trained staff only.

Storage: -20 °C

Storage Comment: Store at -20°C.
Aliquot to avoid repeated freezing and thawing.

Images



Western Blotting

Image 1. Western blot analysis of extracts from LX-2 cells transfected with PTP4A3 using PTP4A3 polyclonal antibody