

Datasheet for ABIN5586475

anti-PTPMT1 antibody[Go to Product page](#)**1** Image

Overview

Quantity:	50 µg
Target:	PTPMT1
Reactivity:	Human, Gorilla
Host:	Rabbit
Clonality:	Polyclonal
Conjugate:	This PTPMT1 antibody is un-conjugated
Application:	Immunohistochemistry (Paraffin-embedded Sections) (IHC (p))

Product Details

Purpose:	Rabbit polyclonal antibody raised against synthetic peptide of PTPMT1.
Immunogen:	A synthetic peptide (conjugated with KLH) corresponding to human PTPMT1.
Specificity:	Internal domain of human.
Cross-Reactivity:	Gorilla, Human

Target Details

Target:	PTPMT1
Alternative Name:	PTPMT1 (PTPMT1 Products)
Background:	Full Gene Name: protein tyrosine phosphatase, mitochondrial 1 Synonyms: DUSP23,FLJ46081,MOSP,PLIP,PNAS-129
Gene ID:	114971

Target Details

Pathways: [Inositol Metabolic Process](#)

Application Details

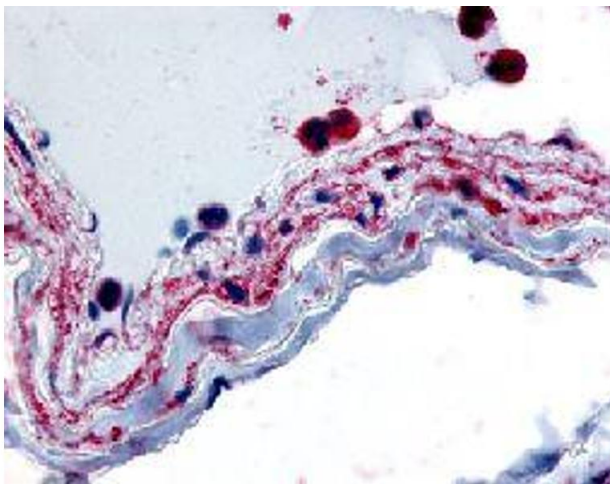
Application Notes: Immunohistochemistry (Formalin/PFA-fixed paraffin-embedded sections) (10-15 µg/mL)
The optimal working dilution should be determined by the end user.

Restrictions: For Research Use only

Handling

Format:	Liquid
Buffer:	In PBS (0.09 % sodium azide)
Preservative:	Sodium azide
Precaution of Use:	This product contains Sodium azide: a POISONOUS AND HAZARDOUS SUBSTANCE which should be handled by trained staff only.
Storage:	4 °C,-80 °C
Storage Comment:	Store at 4°C. For long term storage store at -80°C. Aliquot to avoid repeated freezing and thawing.

Images



Immunohistochemistry

Image 1. Immunohistochemical (Formalin/PFA-fixed paraffin-embedded sections) staining in human vascular smooth muscle with PTPMT1 polyclonal antibody .