

Datasheet for ABIN5586476

anti-PTPMT1 antibody[Go to Product page](#)**1** Image

Overview

| | |
|--------------|---|
| Quantity: | 50 µg |
| Target: | PTPMT1 |
| Reactivity: | Human, Dog, Monkey, Gorilla |
| Host: | Rabbit |
| Clonality: | Polyclonal |
| Conjugate: | This PTPMT1 antibody is un-conjugated |
| Application: | Immunohistochemistry (Paraffin-embedded Sections) (IHC (p)) |

Product Details

| | |
|-------------------|--|
| Purpose: | Rabbit polyclonal antibody raised against synthetic peptide of PTPMT1. |
| Immunogen: | A synthetic peptide (conjugated with KLH) corresponding to human PTPMT1. |
| Specificity: | N-terminal region of human. |
| Cross-Reactivity: | Dog, Gorilla, Human, Monkey |

Target Details

| | |
|-------------------|---|
| Target: | PTPMT1 |
| Alternative Name: | PTPMT1 (PTPMT1 Products) |
| Background: | Full Gene Name: protein tyrosine phosphatase, mitochondrial 1 Synonyms: DUSP23,FLJ46081,MOSP,PLIP,PNAS-129 |
| Gene ID: | 114971 |

Target Details

Pathways: [Inositol Metabolic Process](#)

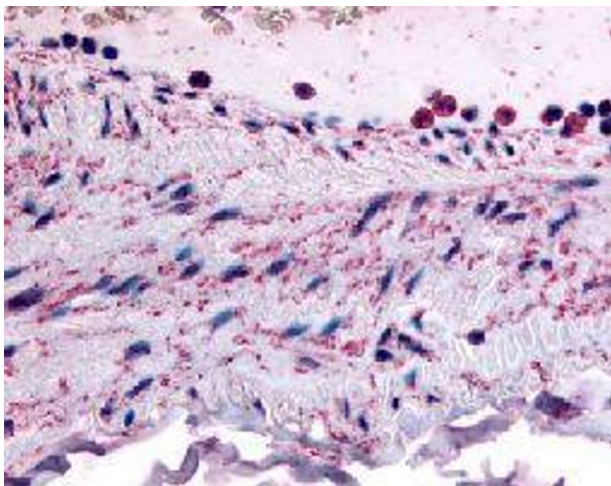
Application Details

| | |
|--------------------|--|
| Application Notes: | Immunohistochemistry (Formalin/PFA-fixed paraffin-embedded sections) (10-15 µg/mL) The optimal working dilution should be determined by the end user. |
| Restrictions: | For Research Use only |

Handling

| | |
|--------------------|--|
| Format: | Liquid |
| Buffer: | In PBS (0.09 % sodium azide) |
| Preservative: | Sodium azide |
| Precaution of Use: | This product contains Sodium azide: a POISONOUS AND HAZARDOUS SUBSTANCE which should be handled by trained staff only. |
| Storage: | 4 °C,-80 °C |
| Storage Comment: | Store at 4°C. For long term storage store at -80°C. Aliquot to avoid repeated freezing and thawing. |

Images



Immunohistochemistry

Image 1. Immunohistochemical (Formalin/PFA-fixed paraffin-embedded sections) staining in human vascular smooth muscle with PTPMT1 polyclonal antibody .