

Datasheet for ABIN5586478
anti-PTPN1 antibody (AA 268-406)

3 Images

[Go to Product page](#)

Overview

Quantity:	100 µL
Target:	PTPN1
Binding Specificity:	AA 268-406
Reactivity:	Human
Host:	Rabbit
Clonality:	Polyclonal
Conjugate:	This PTPN1 antibody is un-conjugated
Application:	Western Blotting (WB), Immunofluorescence (IF), Immunohistochemistry (Paraffin-embedded Sections) (IHC (p))

Product Details

Purpose:	Rabbit polyclonal antibody raised against partial recombinant human PTPN1.
Immunogen:	Recombinant protein corresponding to amino acids 268-406 of human PTPN1.
Sequence:	RFSYLAVIEG AKFIMGDSSV QDQWKELSHE DLEPPPEHIP PPPRPPKRIL EPHNGKCREF FPNHQWVKEE TQEDKDCPIK EEKGSLNAA PYGIESMSQD TEVRSRVVGG SLRGAQAASP AKGEPSLPEK DEDHALSYW
Isotype:	IgG
Cross-Reactivity:	Human

Target Details

Target:	PTPN1
---------	-------

Target Details

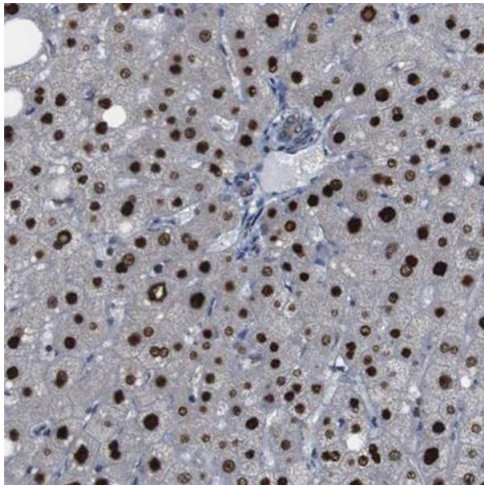
Alternative Name:	PTPN1 (PTPN1 Products)
Background:	Full Gene Name: protein tyrosine phosphatase, non-receptor type 1 Synonyms: PTP1B
Gene ID:	5770
Pathways:	TLR Signaling , Response to Growth Hormone Stimulus , ER-Nucleus Signaling , Platelet-derived growth Factor Receptor Signaling

Application Details

Application Notes:	Immunofluorescence (1 - 4 µg/mL) Immunohistochemistry (Formalin/PFA-fixed paraffin-embedded sections) (1:50 - 1:200) Western Blot (1:250 - 1:500) The optimal working dilution should be determined by the end user.
Restrictions:	For Research Use only

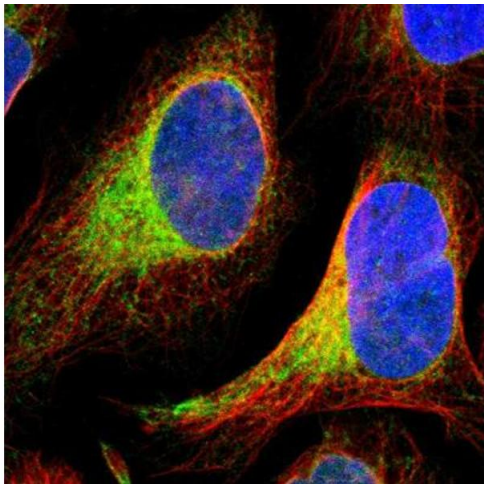
Handling

Format:	Liquid
Buffer:	In PBS, pH 7.2 (40 % glycerol, 0.02 % sodium azide).
Preservative:	Sodium azide
Precaution of Use:	This product contains Sodium azide: a POISONOUS AND HAZARDOUS SUBSTANCE which should be handled by trained staff only.
Storage:	4 °C,-20 °C
Storage Comment:	Store at 4°C for short term storage. For long term storage store at -20°C. Aliquot to avoid repeated freezing and thawing.



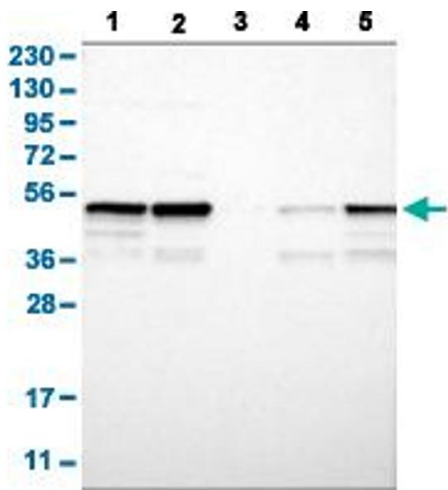
Immunohistochemistry

Image 1. Immunohistochemical staining (Formalin-fixed paraffin-embedded sections) of human liver with PTPN1 polyclonal antibody shows strong nuclear positivity in hepatocytes.



Immunofluorescence

Image 2. Immunofluorescent staining of human cell line U-2 OS with PTPN1 polyclonal antibody shows positivity in endoplasmic reticulum. Antibody staining is shown in green.



Western Blotting

Image 3. Western Blot analysis with PTPN1 polyclonal antibody . Lane 1: Human cell line RT-4 Lane 2: Human cell line U-251MG sp Lane 3: Human plasma (IgG/HSA depleted) Lane 4: Human liver tissue Lane 5: Human tonsil tissue