

Datasheet for ABIN5586585 anti-PTPRE antibody (Cytoplasmic Domain)

[Go to Product page](#)

2 Images

Overview

Quantity:	50 µg
Target:	PTPRE
Binding Specificity:	Cytoplasmic Domain
Reactivity:	Human, Cow, Dog, Horse, Bat, Chicken, Monkey, Hamster, Gibbon
Host:	Rabbit
Clonality:	Polyclonal
Conjugate:	This PTPRE antibody is un-conjugated
Application:	Immunohistochemistry (Paraffin-embedded Sections) (IHC (p))

Product Details

Purpose:	Rabbit polyclonal antibody raised against synthetic peptide of PTPRE.
Immunogen:	A synthetic peptide corresponding to 18 amino acids at cytoplasmic domain of human PTPRE.
Specificity:	BLAST analysis of the peptide immunogen showed no homology with other human proteins, except PTPRA (67 %).
Cross-Reactivity:	Bat, Chicken, Cow, Dog, Gibbon, Hamster, Horse, Human, Monkey
Cross-Reactivity (Details):	BLAST analysis of the peptide immunogen showed no homology with other human proteins, except PTPRA (67 %).

Target Details

Target:	PTPRE
---------	-------

Target Details

Alternative Name:	PTPRE (PTPRE Products)
Background:	Full Gene Name: protein tyrosine phosphatase, receptor type, E Synonyms: DKFZp313F1310,FLJ57799,FLJ58245,HPTPE,PTPE,R-PTP-EPSILON
Gene ID:	5791

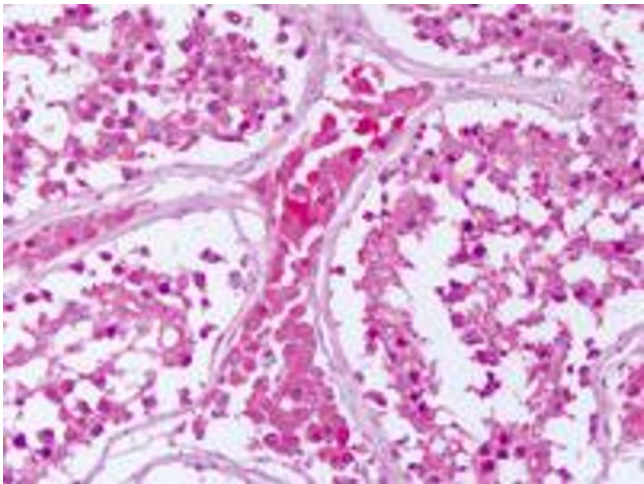
Application Details

Application Notes:	Immunohistochemistry (Formalin/PFA-fixed paraffin-embedded sections) (3-6 µg/mL) The optimal working dilution should be determined by the end user.
Restrictions:	For Research Use only

Handling

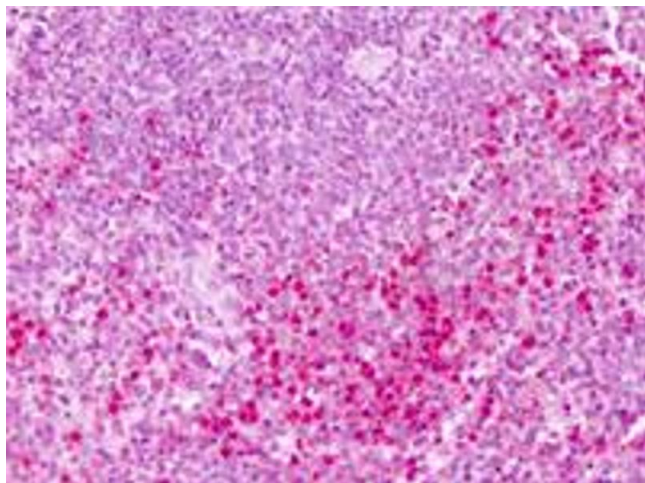
Format:	Liquid
Buffer:	In PBS (0.09 % sodium azide)
Preservative:	Sodium azide
Precaution of Use:	This product contains Sodium azide: a POISONOUS AND HAZARDOUS SUBSTANCE which should be handled by trained staff only.
Storage:	4 °C,-80 °C
Storage Comment:	Store at 4°C. For long term storage store at -80°C. Aliquot to avoid repeated freezing and thawing.

Images



Immunohistochemistry

Image 1. Immunohistochemistry (Formalin/PFA-fixed paraffin-embedded sections) of human testis with PTPRE polyclonal antibody . Immunohistochemistry of formalin-fixed, paraffin-embedded tissue after heat-induced antigen retrieval.



Immunohistochemistry

Image 2. Immunohistochemistry (Formalin/PFA-fixed paraffin-embedded sections) of human spleen with PTPRE polyclonal antibody . Immunohistochemistry of formalin-fixed, paraffin-embedded tissue after heat-induced antigen retrieval.