



[Go to Product page](#)

Datasheet for ABIN5586619  
**anti-Paxillin antibody (N-Term)**

2 Images

Overview

Quantity:	100 µL
Target:	Paxillin (PXN)
Binding Specificity:	N-Term
Reactivity:	Human
Host:	Rabbit
Clonality:	Monoclonal
Conjugate:	This Paxillin antibody is un-conjugated
Application:	Western Blotting (WB), Immunocytochemistry (ICC)

Product Details

Purpose:	Recombinant rabbit monoclonal antibody raised against of human PXN.
Immunogen:	Original antibody is raised against a synthetic peptide corresponding to N-terminus of human PXN.
Clone:	RM256
Isotype:	IgG
Cross-Reactivity:	Human

Target Details

Target:	Paxillin (PXN)
Alternative Name:	PXN ( <a href="#">PXN Products</a> )

## Target Details

---

Background:	Full Gene Name: paxillin Synonyms: FLJ16691
Gene ID:	5829
Pathways:	<a href="#">MAPK Signaling</a> , <a href="#">EGFR Signaling Pathway</a> , <a href="#">Response to Growth Hormone Stimulus</a> , <a href="#">Cell-Cell Junction Organization</a> , <a href="#">Maintenance of Protein Location</a> , <a href="#">CXCR4-mediated Signaling Events</a> , <a href="#">Signaling Events mediated by VEGFR1 and VEGFR2</a> , <a href="#">Signaling of Hepatocyte Growth Factor Receptor</a> , <a href="#">VEGF Signaling</a>

## Application Details

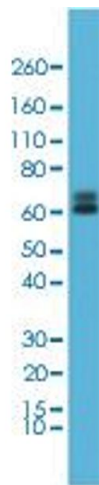
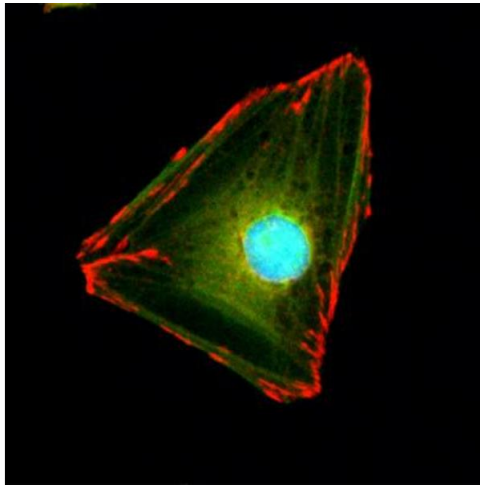
---

Application Notes:	Immunocytochemistry (1:1000-1:2000) Western Blot (1:1000-1:2000) The optimal working dilution should be determined by the end user.
Restrictions:	For Research Use only

## Handling

---

Format:	Liquid
Buffer:	In PBS (50 % glycerol, 1 % BSA, 0.09 % sodium azide)
Preservative:	Sodium azide
Precaution of Use:	This product contains Sodium azide: a POISONOUS AND HAZARDOUS SUBSTANCE which should be handled by trained staff only.
Storage:	-20 °C
Storage Comment:	Store at -20°C. Aliquot to avoid repeated freezing and thawing.



### Immunocytochemistry

**Image 1.** Immunocytochemistry staining of HeLa cells with PXN monoclonal antibody, clone RM256 (Red). Actin filaments have been labeled with fluorescein phalloidin (Green), and nucleus stained with DAPI (Blue).

### Western Blotting

**Image 2.** Western blot analysis of HeLa cell lysates with PXN monoclonal antibody, clone RM256 at a 1:1000 dilution.