

Datasheet for ABIN5586649

**anti-R3HCC1 antibody**[Go to Product page](#)**1** Image

## Overview

Quantity:	100 µL
Target:	R3HCC1
Reactivity:	Human
Host:	Rabbit
Clonality:	Polyclonal
Conjugate:	This R3HCC1 antibody is un-conjugated
Application:	Immunohistochemistry (Paraffin-embedded Sections) (IHC (p))

## Product Details

Purpose:	Rabbit polyclonal antibody raised against recombinant R3HCC1.
Immunogen:	Recombinant protein corresponding to amino acids of human R3HCC1.
Sequence:	DQPLYVPRVL RKQEEWGLTS TSVLKREAPA GRDPEEPGDV GAGDPNSDQG LPVLMQTGTE DLKGGPGQRCE NEPLLD
Isotype:	IgG
Cross-Reactivity:	Human

## Target Details

Target:	R3HCC1
Alternative Name:	R3HCC1 ( <a href="#">R3HCC1 Products</a> )
Background:	Full Gene Name: R3H domain and coiled-coil containing 1

## Target Details

	Synonyms: DKFZp564N123
Gene ID:	203069

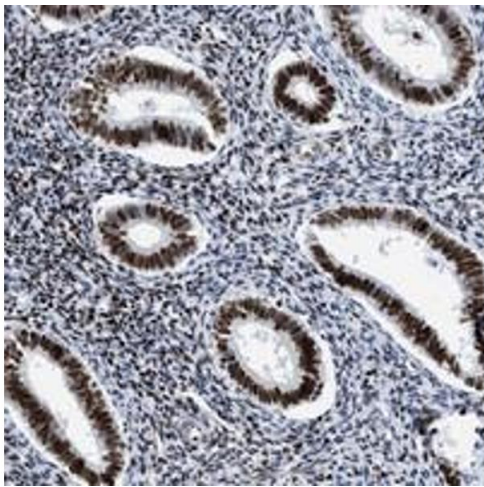
## Application Details

Application Notes:	Immunohistochemistry (1:200-1:500) The optimal working dilution should be determined by the end user.
Restrictions:	For Research Use only

## Handling

Format:	Liquid
Buffer:	In PBS, pH 7.2 (40 % glycerol, 0.02 % sodium azide)
Preservative:	Sodium azide
Precaution of Use:	This product contains Sodium azide: a POISONOUS AND HAZARDOUS SUBSTANCE which should be handled by trained staff only.
Storage:	4 °C,-20 °C
Storage Comment:	Store at 4°C. For long term storage store at -20°C. Aliquot to avoid repeated freezing and thawing.

## Images



### Immunohistochemistry

**Image 1.** Immunohistochemical staining of human corpus, uterine with R3HCC1 polyclonal antibody shows strong nuclear positivity in glandular cells at 1:200-1:500 dilution.