



[Go to Product page](#)

Datasheet for ABIN5586703  
**anti-RAC2 antibody (AA 1-189)**

2 Images

Overview

Quantity:	50 µL
Target:	RAC2
Binding Specificity:	AA 1-189
Reactivity:	Human
Host:	Mouse
Clonality:	Monoclonal
Conjugate:	This RAC2 antibody is un-conjugated
Application:	Western Blotting (WB), ELISA, Immunohistochemistry (Paraffin-embedded Sections) (IHC (p))

Product Details

Purpose:	Mouse monoclonal antibody raised against partial recombinant human RAC2.
Immunogen:	Recombinant protein corresponding to amino acids 1-189 of human RAC2.
Clone:	AT2G11
Isotype:	IgG2b
Specificity:	This antibody detects both RAC1 and RAC2 by Western blot testing using recombinant proteins.
Cross-Reactivity:	Human

Target Details

Target:	RAC2
---------	------

## Target Details

---

Alternative Name:	<a href="#">RAC2 (RAC2 Products)</a>
Background:	Full Gene Name: ras-related C3 botulinum toxin substrate 2 (rho family, small GTP binding protein Rac2) Synonyms: EN-7,Gx,HSPC022
Gene ID:	5880
Pathways:	<a href="#">RTK Signaling</a> , <a href="#">VEGF Signaling</a>

## Application Details

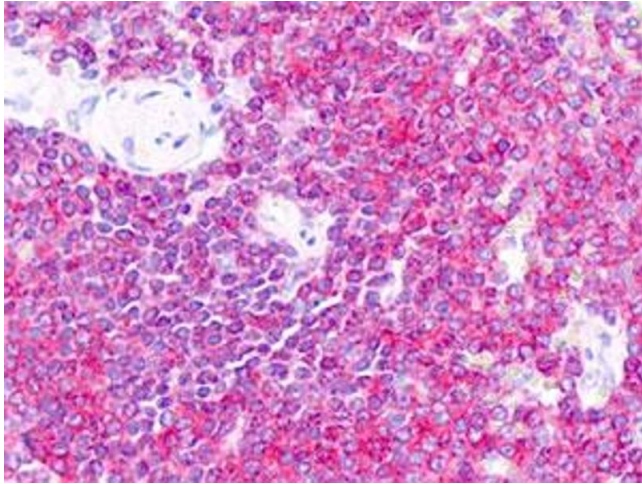
---

Application Notes:	ELISA Immunohistochemistry (Formalin/PFA-fixed paraffin-embedded sections) (10 µg/mL) Western Blot (1:1000) The optimal working dilution should be determined by the end user.
Restrictions:	For Research Use only

## Handling

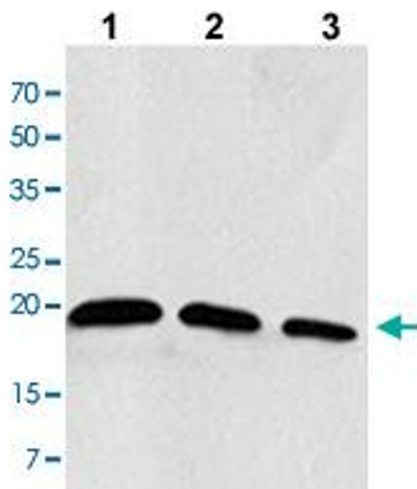
---

Format:	Liquid
Buffer:	In PBS, pH 7.4 (0.09 % sodium azide)
Preservative:	Sodium azide
Precaution of Use:	This product contains Sodium azide: a POISONOUS AND HAZARDOUS SUBSTANCE which should be handled by trained staff only.
Storage:	4 °C,-20 °C
Storage Comment:	Store at 4°C. For long term storage store at -20°C. Aliquot to avoid repeated freezing and thawing.



### Immunohistochemistry

**Image 1.** Immunohistochemical staining (Formalin-fixed paraffin-embedded sections) of human spleen tissue with RAC2 monoclonal antibody, clone AT2G11 under 10 ug/mL working concentration.



### Western Blotting

**Image 2.** Western blot analysis of the extracts of Jurkat cells Lane 1: 30 ug, Lane 2: 20 ug, Lane 3: 10 ug with RAC2 monoclonal antibody, clone AT2G11 at 1:1000 dilution.