

Datasheet for ABIN5586822

**anti-p107 antibody****1** Image[Go to Product page](#)

## Overview

Quantity:	100 µg
Target:	p107 (RBL1)
Reactivity:	Human, Mouse
Host:	Mouse
Clonality:	Monoclonal
Conjugate:	This p107 antibody is un-conjugated
Application:	Western Blotting (WB)

## Product Details

Purpose:	Mouse monoclonal antibody raised against partial recombinant RBL1.
Immunogen:	Recombinant GST fusion protein corresponding to N-terminus of RBL1.
Clone:	KAB6
Isotype:	IgG1
Specificity:	This antibody recognizes both the phosphorylated and unphosphorylated forms of p107 at MW of 107 KDa.
Cross-Reactivity:	Human, Mouse

## Target Details

Target:	p107 (RBL1)
Alternative Name:	Rbl1 ( <a href="#">RBL1 Products</a> )

## Target Details

Background: Full Gene Name: retinoblastoma-like 1 (p107)  
Synonyms: AW547426,PRB1,p107

Gene ID: 19650

Pathways: [Cell Division Cycle, Mitotic G1-G1/S Phases](#)

## Application Details

Application Notes: Western blot (1:1000)  
The optimal working dilution should be determined by the end user.

Comment: Product Quality tested by: Antibody Reactive Against Recombinant Protein.

Restrictions: For Research Use only

## Handling

Format: Liquid

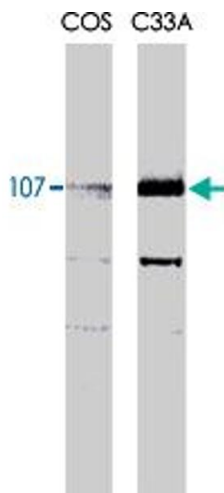
Buffer: In PBS (0.08 % sodium azide)

Preservative: Sodium azide

Precaution of Use: This product contains Sodium azide: a POISONOUS AND HAZARDOUS SUBSTANCE which should be handled by trained staff only.

Storage: -20 °C

Storage Comment: Store at -20°C.  
Aliquot to avoid repeated freezing and thawing.



#### Western Blotting

**Image 1.** Rbl1 monoclonal antibody, clone KAB6 recognizes both the phosphorylated and unphosphorylated forms of p107 at 107kDa. The primary antibody diluted at 1:1000.