



[Go to Product page](#)

Datasheet for ABIN5586945
anti-RELT-Like 1 antibody

3 Images

Overview

Quantity:	100 µL
Target:	RELT-Like 1 (RELL1)
Reactivity:	Human
Host:	Rabbit
Clonality:	Polyclonal
Conjugate:	This RELT-Like 1 antibody is un-conjugated
Application:	Immunofluorescence (IF), Immunohistochemistry (Paraffin-embedded Sections) (IHC (p)), Western Blotting (WB)

Product Details

Purpose:	Rabbit polyclonal antibody raised against recombinant RELL1.
Immunogen:	Recombinant protein corresponding to amino acids of human RELL1.
Sequence:	NEANADVLKA MVADNSLYDP ESPVTPSTPG SPPVSPGPLS PGGTPGKHVC GHHLHTVGGV VERDVCHRCR HKRWHFIKPT NKSRESRPRR QGEVTVLSVG RFRVTKVEHK SNQKERRSLM SVSGAETVNG E
Isotype:	IgG
Cross-Reactivity:	Human

Target Details

Target:	RELT-Like 1 (RELL1)
Alternative Name:	RELL1 (RELL1 Products)

Target Details

Background:	Full Gene Name: RELT-like 1 Synonyms: FLJ21778,MGC50583
Gene ID:	768211

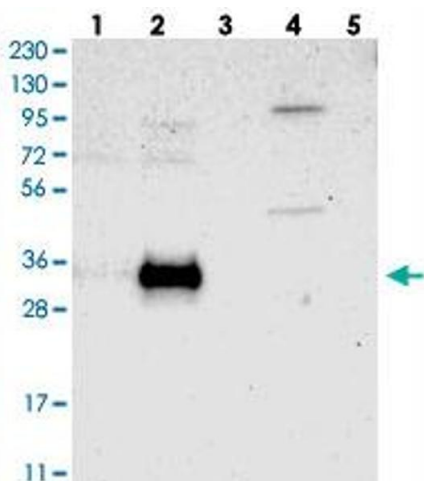
Application Details

Application Notes:	Immunohistochemistry (1:20-1:50) Western Blot (1:250-1:500) Immunofluorescence (1-4 µg/mL) The optimal working dilution should be determined by the end user.
Restrictions:	For Research Use only

Handling

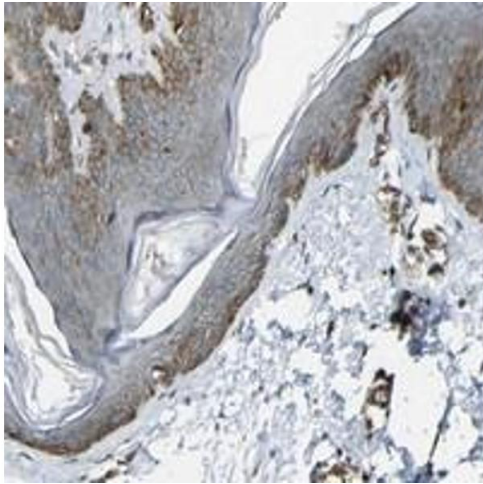
Format:	Liquid
Buffer:	In PBS, pH 7.2 (40 % glycerol, 0.02 % sodium azide)
Preservative:	Sodium azide
Precaution of Use:	This product contains Sodium azide: a POISONOUS AND HAZARDOUS SUBSTANCE which should be handled by trained staff only.
Storage:	4 °C,-20 °C
Storage Comment:	Store at 4°C. For long term storage store at -20°C. Aliquot to avoid repeated freezing and thawing.

Images



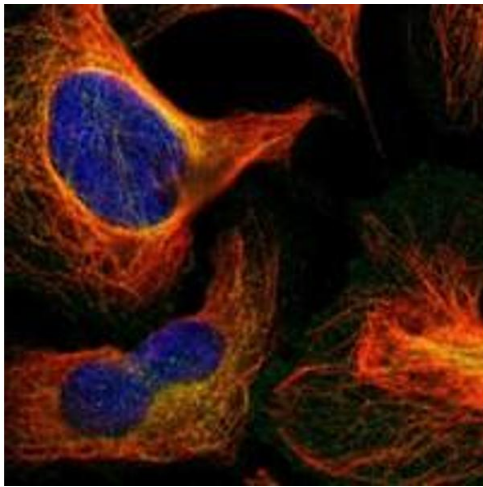
Western Blotting

Image 1. Western blot analysis of Lane 1: RT-4, Lane 2: U-251 MG, Lane 3: Human Plasma, Lane 4: Liver, Lane 5: Tonsil with RELT1 polyclonal antibody at 1:250-1:500 dilution.



Immunohistochemistry

Image 2. Immunohistochemical staining of human skin with RELL1 polyclonal antibody shows strong cytoplasmic positivity in epidermal cells and endothelial cells at 1:20-1:50 dilution.



Immunofluorescence

Image 3. Immunofluorescent staining of human cell line U-2 OS with RELL1 polyclonal antibody at 1-4 ug/mL dilution shows positivity in plasma membrane, cytoskeleton (microtubules).