



[Go to Product page](#)

Datasheet for ABIN5586951
anti-RESP18 antibody

1 Image

Overview

Quantity:	100 µL
Target:	RESP18
Reactivity:	Human
Host:	Rabbit
Clonality:	Polyclonal
Application:	Immunohistochemistry (Paraffin-embedded Sections) (IHC (p))

Product Details

Purpose:	Rabbit polyclonal antibody raised against recombinant RESP18.
Immunogen:	Recombinant protein corresponding to amino acids of recombinant RESP18.
Sequence:	PTKTTESPLA KVNDRQCFTS EVVSKALKQE VANPVKITYR CSYGGLDMMQ APGPSKEEII YKIMRLLWAT S
Isotype:	IgG
Cross-Reactivity:	Human

Target Details

Target:	RESP18
Alternative Name:	RESP18 (RESP18 Products)
Background:	Full Gene Name: regulated endocrine-specific protein 18
Gene ID:	389075

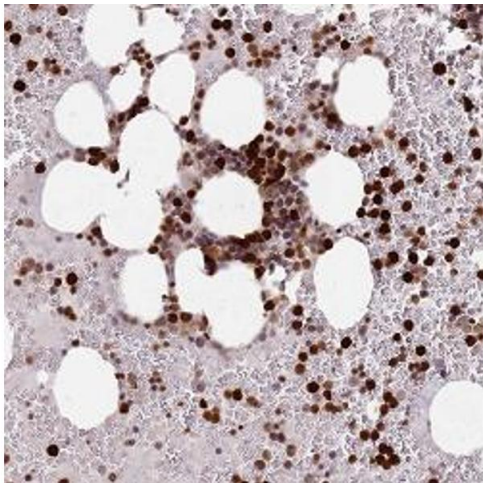
Application Details

Application Notes:	Immunohistochemistry (1:50-1:200) The optimal working dilution should be determined by the end user.
Restrictions:	For Research Use only

Handling

Format:	Liquid
Buffer:	In PBS, pH 7.2 (40 % glycerol, 0.02 % sodium azide)
Preservative:	Sodium azide
Precaution of Use:	This product contains Sodium azide: a POISONOUS AND HAZARDOUS SUBSTANCE which should be handled by trained staff only.
Storage:	4 °C,-20 °C
Storage Comment:	Store at 4°C. For long term storage store at -20°C. Aliquot to avoid repeated freezing and thawing.

Images



Immunohistochemistry

Image 1. Immunohistochemical staining of human bone marrow with RESP18 polyclonal antibody (Cat # PAB28328) shows strong nuclear and cytoplasmic positivity in hematopoietic cells at 1:50 - 1:200 dilution.