

Datasheet for ABIN5586981

anti-RGL3 antibody[Go to Product page](#)**1** Image

Overview

Quantity:	100 µL
Target:	RGL3
Reactivity:	Human
Host:	Rabbit
Clonality:	Polyclonal
Conjugate:	This RGL3 antibody is un-conjugated
Application:	Immunohistochemistry (Paraffin-embedded Sections) (IHC (p))

Product Details

Purpose:	Rabbit polyclonal antibody raised against recombinant RGL3.
Immunogen:	Recombinant protein corresponding to amino acids of recombinant RGL3.
Sequence:	VEIKKTAVQD LSFNKNLRAV VSVLGSWLQD HPQDFRDHPA HSDLGSRVTF LGWAAPGSAE AQKAEKLLED
Isotype:	IgG
Cross-Reactivity:	Human

Target Details

Target:	RGL3
Alternative Name:	RGL3 (RGL3 Products)
Background:	Full Gene Name: ral guanine nucleotide dissociation stimulator-like 3

Target Details

Synonyms: FLJ00153,FLJ32585,MGC126805,MGC138163

Gene ID: 57139

Application Details

Application Notes: Immunohistochemistry (1:20-1:50)
The optimal working dilution should be determined by the end user.

Restrictions: For Research Use only

Handling

Format: Liquid

Buffer: In PBS, pH 7.2 (40 % glycerol, 0.02 % sodium azide)

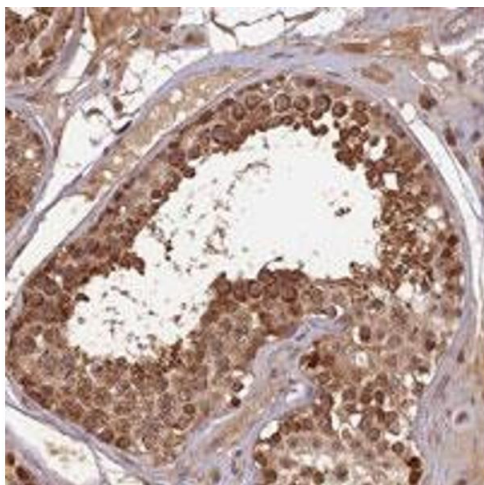
Preservative: Sodium azide

Precaution of Use: This product contains Sodium azide: a POISONOUS AND HAZARDOUS SUBSTANCE which should be handled by trained staff only.

Storage: 4 °C,-20 °C

Storage Comment: Store at 4°C. For long term storage store at -20°C.
Aliquot to avoid repeated freezing and thawing.

Images



Immunohistochemistry

Image 1. Immunohistochemical staining of human testis with RGL3 polyclonal antibody shows strong cytoplasmic positivity in cells of seminiferous ducts.