

Datasheet for ABIN5586983  
**anti-Regucalcin antibody**[Go to Product page](#)

## 1 Image

## Overview

Quantity:	100 µg
Target:	Regucalcin (RGN)
Reactivity:	Human
Host:	Mouse
Clonality:	Monoclonal
Conjugate:	This Regucalcin antibody is un-conjugated
Application:	Western Blotting (WB), ELISA

## Product Details

Purpose:	Mouse monoclonal antibody raised against full length recombinant RGN.
Immunogen:	Recombinant protein corresponding to full length human RGN.
Clone:	17
Isotype:	IgG2a
Specificity:	It can expression in mouse liver whole cell lysate.
Cross-Reactivity:	Human

## Target Details

Target:	Regucalcin (RGN)
Alternative Name:	RGN ( <a href="#">RGN Products</a> )
Background:	Full Gene Name: regucalcin (senescence marker protein-30)

## Target Details

	Synonyms: RC,SMP30
Gene ID:	9104
NCBI Accession:	<a href="#">NM_152869</a>

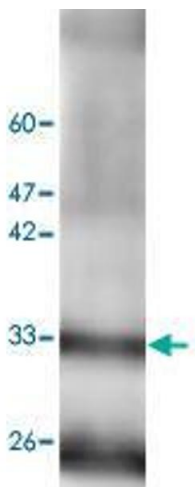
## Application Details

Application Notes:	Western blot (1:1000) The optimal working dilution should be determined by the end user.
Restrictions:	For Research Use only

## Handling

Format:	Liquid
Buffer:	In Citrate-Tris-HCl buffer, pH 7.0 (0.02 % Proclin 300)
Preservative:	ProClin
Precaution of Use:	This product contains ProClin: a POISONOUS AND HAZARDOUS SUBSTANCE which should be handled by trained staff only.
Storage:	4 °C,-20 °C
Storage Comment:	Store at 4°C. For long term storage store at -20°C. Aliquot to avoid repeated freezing and thawing.

## Images



### Western Blotting

**Image 1.** Western blot analysis of mouse liver lystae with RGN monoclonal antibody, clone 17 at 1:1000 dilution.