



[Go to Product page](#)

Datasheet for ABIN5587007

anti-Rho-related GTP-binding protein antibody

2 Images

Overview

Quantity:	50 µL
Target:	Rho-related GTP-binding protein (RhO (pan))
Reactivity:	Cow
Host:	Mouse
Clonality:	Monoclonal
Conjugate:	This Rho-related GTP-binding protein antibody is un-conjugated
Application:	Western Blotting (WB), Immunocytochemistry (ICC), Immunohistochemistry (Paraffin-embedded Sections) (IHC (p)), Immunofluorescence (IF)

Product Details

Purpose:	Mouse monoclonal antibody raised against native bovine RHO.
Immunogen:	Native purified RHO from bovine retinal outer segments.
Clone:	B630
Isotype:	IgG1
Cross-Reactivity:	Cow, Human, Mouse, Pig, Rat

Target Details

Target:	Rho-related GTP-binding protein (RhO (pan))
Alternative Name:	RHO (RhO (pan) Products)
Target Type:	Chemical

Target Details

Background: Full Gene Name: rhodopsin

Gene ID: 509933

Application Details

Application Notes: Immunocytochemistry
Immunofluorescence (1:1000)
Immunohistochemistry (Formalin/PFA-fixed paraffin-embedded sections) (10 µg/mL)
Western Blot (1:5000)
The optimal working dilution should be determined by the end user.

Restrictions: For Research Use only

Handling

Format: Liquid

Buffer: In PBS (10 mM sodium azide)

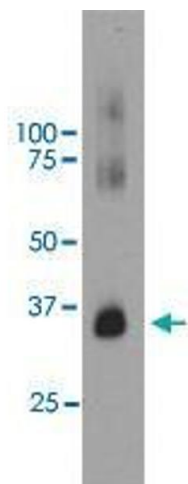
Preservative: Sodium azide

Precaution of Use: This product contains Sodium azide: a POISONOUS AND HAZARDOUS SUBSTANCE which should be handled by trained staff only.

Storage: 4 °C, -20 °C

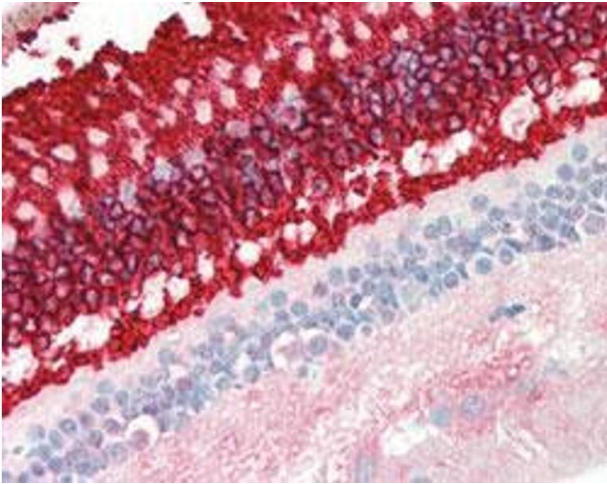
Storage Comment: Store at 4°C. For long term storage store at -20°C.
Aliquot to avoid repeated freezing and thawing.

Images



Western Blotting

Image 1. Western blot analysis of bovine retinal extracts using RHO monoclonal antibody, clone B630 at 1:5000 dilution.



Immunohistochemistry

Image 2. Immunohistochemical staining (Formalin-fixed paraffin-embedded sections) of human retina tissue with RHO monoclonal antibody, clone B630 under 10 ug/mL working concentration.