

Datasheet for ABIN5587018
anti-RICTOR antibody (AA 1406-1700)[Go to Product page](#)

2 Images

Overview

Quantity:	100 µg
Target:	RICTOR
Binding Specificity:	AA 1406-1700
Reactivity:	Human
Host:	Rabbit
Clonality:	Polyclonal
Conjugate:	This RICTOR antibody is un-conjugated
Application:	Western Blotting (WB), ELISA, Immunohistochemistry (Paraffin-embedded Sections) (IHC (p))

Product Details

Purpose:	Rabbit polyclonal antibody raised against partial recombinant RICTOR.
Immunogen:	Recombinant protein corresponding to amino acids 1406-1700 of human RICTOR.
Cross-Reactivity:	Human

Target Details

Target:	RICTOR
Alternative Name:	RICTOR (RICTOR Products)
Background:	Full Gene Name: rapamycin-insensitive companion of mTOR Synonyms: DKFZp686B11164,KIAA1999,MGC39830,mAVO3
Gene ID:	253260

Target Details

Pathways:	Fc-epsilon Receptor Signaling Pathway , EGFR Signaling Pathway , Neurotrophin Signaling Pathway , Regulation of Actin Filament Polymerization , CXCR4-mediated Signaling Events
-----------	---

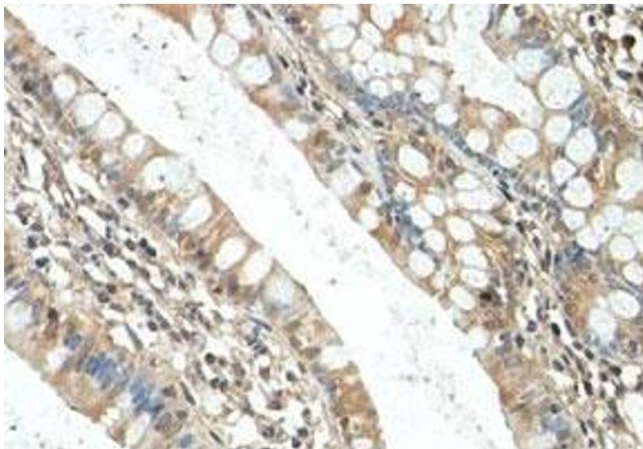
Application Details

Application Notes:	ELISA (1:10000-1:80000) Western Blot (1:200-1:1000) Immunohistochemistry (1:50-1:200) The optimal working dilution should be determined by the end user.
Restrictions:	For Research Use only

Handling

Format:	Liquid
Buffer:	In buffer containing 0.02 % sodium azide
Preservative:	Sodium azide
Precaution of Use:	This product contains Sodium azide: a POISONOUS AND HAZARDOUS SUBSTANCE which should be handled by trained staff only.
Storage:	4 °C,-20 °C
Storage Comment:	Store at 4°C for three months. For long term storage store at -20°C. Aliquot to avoid repeated freezing and thawing.

Images



Immunohistochemistry

Image 1. Immunohistochemical staining of formalin-fixed paraffin-embedded human fetal small intestine tissue showing cytoplasmic staining with RICTOR polyclonal antibody at 1 : 100 dilution.



Western Blotting

Image 2. Western blot analysis of HeLa cell lysate with RICTOR polyclonal antibody at 1 : 500 dilution.