



[Go to Product page](#)

Datasheet for ABIN5587025  
**anti-RIMBP3 antibody**

1 Image

### Overview

Quantity:	100 µL
Target:	RIMBP3
Reactivity:	Human
Host:	Rabbit
Clonality:	Polyclonal
Application:	Immunohistochemistry (Paraffin-embedded Sections) (IHC (p))

### Product Details

Purpose:	Rabbit polyclonal antibody raised against recombinant RIMBP3.
Immunogen:	Recombinant protein corresponding to amino acids of human RIMBP3.
Sequence:	RDTASEVDDL EPDSVSLALE MGGSAAPAAP KLKIFMAQYN YNPFEGPNDH PEGELPLTAG DYIYIFGDMD EDGFYEGELE DGRRGLVPSN FVEQIPDSYI PGCLPAKSPD LGPSQLPAGQ DEALEE
Isotype:	IgG
Cross-Reactivity:	Human

### Target Details

Target:	RIMBP3
Alternative Name:	RIMBP3 ( <a href="#">RIMBP3 Products</a> )
Background:	Full Gene Name: RIMS binding protein 3 Synonyms: DKFZp434H0735,KIAA1666,RIMBP3.1,RIMBP3A

## Target Details

---

Gene ID: 85376

## Application Details

---

Application Notes: Immunohistochemistry (1:50-1:200)  
The optimal working dilution should be determined by the end user.

Restrictions: For Research Use only

## Handling

---

Format: Liquid

Buffer: In PBS, pH 7.2, (40 % glycerol, 0.02 % sodium azide)

Preservative: Sodium azide

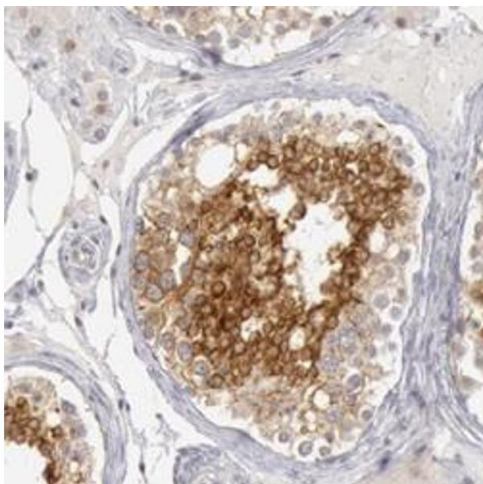
Precaution of Use: This product contains Sodium azide: a POISONOUS AND HAZARDOUS SUBSTANCE which should be handled by trained staff only.

Storage: 4 °C,-20 °C

Storage Comment: Store at 4°C. For long term storage store at -20°C.  
Aliquot to avoid repeated freezing and thawing.

## Images

---



### Immunohistochemistry

**Image 1.** Immunohistochemical staining of human breast with RIMBP3 polyclonal antibody shows strong cytoplasmic positivity in cells in seminiferous ducts.