

Datasheet for ABIN5587029
anti-RING1 antibody (AA 281-392)[Go to Product page](#)

3 Images

Overview

Quantity:	100 µL
Target:	RING1
Binding Specificity:	AA 281-392
Reactivity:	Human
Host:	Rabbit
Clonality:	Polyclonal
Application:	Western Blotting (WB), Immunofluorescence (IF), Immunohistochemistry (Paraffin-embedded Sections) (IHC (p))

Product Details

Purpose:	Rabbit polyclonal antibody raised against partial recombinant human RING1.
Immunogen:	Recombinant protein corresponding to amino acids 281-392 of human RING1.
Sequence:	TRYVKTTGNA TVDHLSKYLA LRIALERRQQ QEAGEPGGGP GGASDTGGPD GCGGEGGGAG GGDGPEEPAL PSLEGVSEKQ YTIYIAPGGG AFTTLNGSLT LELVNEKFWK VS
Isotype:	IgG
Cross-Reactivity:	Human

Target Details

Target:	RING1
Alternative Name:	RING1 (RING1 Products)

Target Details

Background: Full Gene Name: ring finger protein 1
Synonyms: RING1A,RNF1

Gene ID: 6015

Application Details

Application Notes: Immunofluorescence (1 - 4 µg/mL)
Immunohistochemistry (Formalin/PFA-fixed paraffin-embedded sections) (1:200 - 1:500)
Western Blot (1:100 - 1:250)
The optimal working dilution should be determined by the end user.

Restrictions: For Research Use only

Handling

Format: Liquid

Buffer: In PBS, pH 7.2 (40 % glycerol, 0.02 % sodium azide).

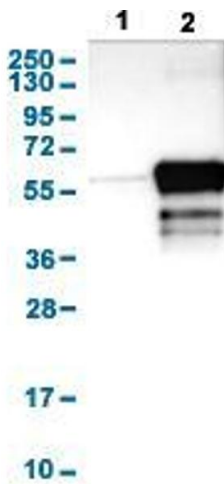
Preservative: Sodium azide

Precaution of Use: This product contains Sodium azide: a POISONOUS AND HAZARDOUS SUBSTANCE which should be handled by trained staff only.

Storage: 4 °C,-20 °C

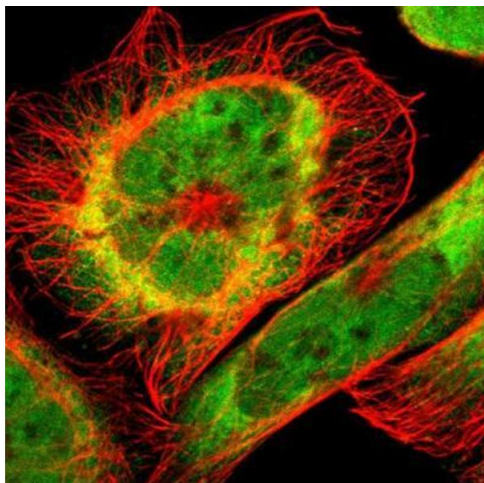
Storage Comment: Store at 4°C for short term storage. For long term storage store at -20°C.
Aliquot to avoid repeated freezing and thawing.

Images



Western Blotting

Image 1. Western Blot analysis with RING1 polyclonal antibody . Lane 1: Negative control (vector only transfected HEK293T lysate) Lane 2: Over-expression lysate (Co-expressed with a C-terminal myc-DDK tag (~3.1 kDa) in mammalian HEK293T cells)



Immunofluorescence

Image 2. Immunofluorescent staining of human cell line A-431 with RING1 polyclonal antibody shows positivity in cytoplasm and nucleus but excluded from the nucleoli. Antibody staining is shown in green.



Immunohistochemistry

Image 3. Immunohistochemical staining (Formalin-fixed paraffin-embedded sections) of human nasopharynx with RING1 polyclonal antibody shows strong nuclear and moderate cytoplasmic positivity in respiratory epithelial cells.