



[Go to Product page](#)

Datasheet for ABIN5587030

anti-RINL antibody

2 Images

Overview

Quantity:	100 µL
Target:	RINL
Reactivity:	Human
Host:	Rabbit
Clonality:	Polyclonal
Conjugate:	This RINL antibody is un-conjugated
Application:	Western Blotting (WB), Immunohistochemistry (Paraffin-embedded Sections) (IHC (p))

Product Details

Purpose:	Rabbit polyclonal antibody raised against recombinant RINL.
Immunogen:	Recombinant protein corresponding to amino acids of human RINL.
Sequence:	RDVLPRTL LLL PPPTLGRDE HTDPVQIGRV QQDTPGKVL S IVNQLYLETH RGWGREQTPQ ETEPEAAQRH DPAPRNPAPH GVSWWKGPLS
Isotype:	IgG
Cross-Reactivity:	Human

Target Details

Target:	RINL
Alternative Name:	RINL (RINL Products)
Background:	Full Gene Name: Ras and Rab interactor-like

Target Details

Synonyms: FLJ44131,FLJ45909

Gene ID: 126432

Application Details

Application Notes: Immunohistochemistry (1:200-1:500)
Western Blot (1:250-1:500)
The optimal working dilution should be determined by the end user.

Restrictions: For Research Use only

Handling

Format: Liquid

Buffer: In PBS, pH 7.2 (40 % glycerol, 0.02 % sodium azide)

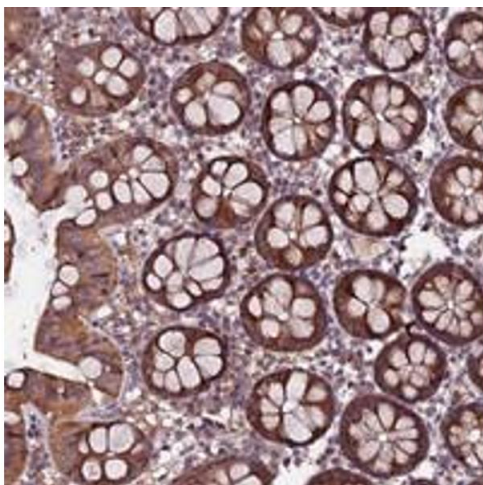
Preservative: Sodium azide

Precaution of Use: This product contains Sodium azide: a POISONOUS AND HAZARDOUS SUBSTANCE which should be handled by trained staff only.

Storage: 4 °C,-20 °C

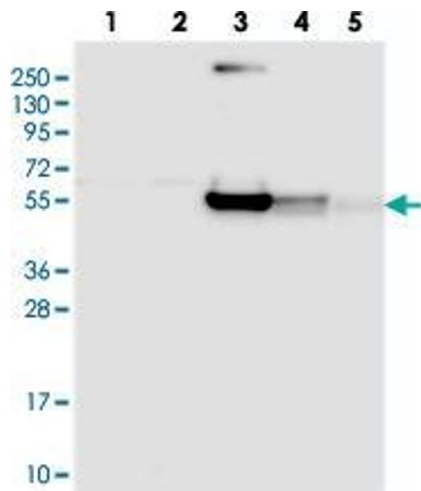
Storage Comment: Store at 4°C. For long term storage store at -20°C.
Aliquot to avoid repeated freezing and thawing.

Images



Immunohistochemistry

Image 1. Immunohistochemical staining of human colon with RINL polyclonal antibody shows strong cytoplasmic positivity in glandular cells.



Western Blotting

Image 2. Western blot analysis of Lane 1: RT-4, Lane 2: U-251 MG, Lane 3: Human Plasma, Lane 4: Liver, Lane 5: Tonsil with RINL polyclonal antibody .