

Datasheet for ABIN5587041

**anti-RIT1 antibody**[Go to Product page](#)**1** Image

## Overview

Quantity:	100 µg
Target:	RIT1
Reactivity:	Human
Host:	Mouse
Clonality:	Monoclonal
Conjugate:	This RIT1 antibody is un-conjugated
Application:	Western Blotting (WB)

## Product Details

Purpose:	Mouse monoclonal antibody raised against full length recombinant RIT1.
Immunogen:	Recombinant protein corresponding to full length human RIT1.
Clone:	14G7
Isotype:	IgG1
Specificity:	This antibody detects recombinant Rit protein. Does not cross-react with Rin protein.
Cross-Reactivity:	Human, Mouse
Characteristics:	Antibody Reactive Against Recombinant Protein.

## Target Details

Target:	RIT1
Alternative Name:	RIT1 ( <a href="#">RIT1 Products</a> )

## Target Details

Background:	Full Gene Name: Ras-like without CAAX 1 Synonyms: MGC125864,MGC125865,RIBB,RIT,ROC1
Gene ID:	6016
Pathways:	<a href="#">Neurotrophin Signaling Pathway</a>

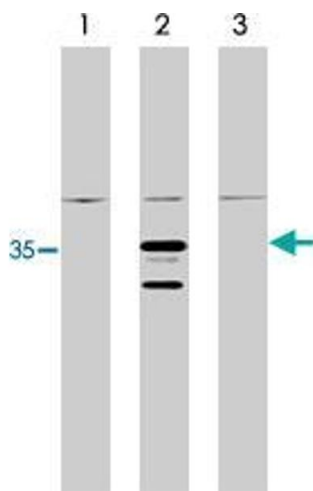
## Application Details

Application Notes:	Western blot (0.5 to 1 µg/mL) The optimal working dilution should be determined by the end user.
Restrictions:	For Research Use only

## Handling

Format:	Liquid
Buffer:	In 20 mM sodium phosphate buffer, 150 mM NaCl, pH 7.5 (50 % glycerol, 3 mM sodium azide)
Preservative:	Sodium azide
Precaution of Use:	This product contains Sodium azide: a POISONOUS AND HAZARDOUS SUBSTANCE which should be handled by trained staff only.
Storage:	-20 °C
Storage Comment:	Store at -20°C. Aliquot to avoid repeated freezing and thawing.

## Images



### Western Blotting

**Image 1.** Western blot analysis using RIT1 monoclonal antibody, clone 14G7 on control 293 cells (lane 1), 293 cells expressing HA-tagged RIT1 protein (lane 2) and 293 cells expressing HA-tagged RIT2 protein (3).