



[Go to Product page](#)

Datasheet for ABIN5587046

## anti-RLTPR antibody

### 1 Image

#### Overview

Quantity:	100 µL
Target:	RLTPR
Reactivity:	Human
Host:	Rabbit
Clonality:	Polyclonal
Conjugate:	This RLTPR antibody is un-conjugated
Application:	Immunohistochemistry (Paraffin-embedded Sections) (IHC (p))

#### Product Details

Purpose:	Rabbit polyclonal antibody raised against recombinant RLTPR.
Immunogen:	Recombinant protein corresponding to amino acids of human RLTPR.
Sequence:	EVNELCQSVQ EHVELLGCGA GPQGEAAVRQ AEDAIQNANF SLSILPILYE AGSSPSHHWQ LGQKLEGLLR QVGEVCRQDI QDFTQ
Isotype:	IgG
Cross-Reactivity:	Human

#### Target Details

Target:	RLTPR
Alternative Name:	RLTPR ( <a href="#">RLTPR Products</a> )
Background:	Full Gene Name: RGD motif, leucine rich repeats, tropomodulin domain and proline-rich

## Target Details

---

containing

Synonyms: CARMIL2b,LRRC16C

---

Gene ID: 146206

---

## Application Details

---

Application Notes: Immunohistochemistry (1:50-1:200)  
The optimal working dilution should be determined by the end user.

---

Restrictions: For Research Use only

---

## Handling

---

Format: Liquid

---

Buffer: In PBS, pH 7.2 (40 % glycerol, 0.02 % sodium azide)

---

Preservative: Sodium azide

---

Precaution of Use: This product contains Sodium azide: a POISONOUS AND HAZARDOUS SUBSTANCE which should be handled by trained staff only.

---

Storage: 4 °C,-20 °C

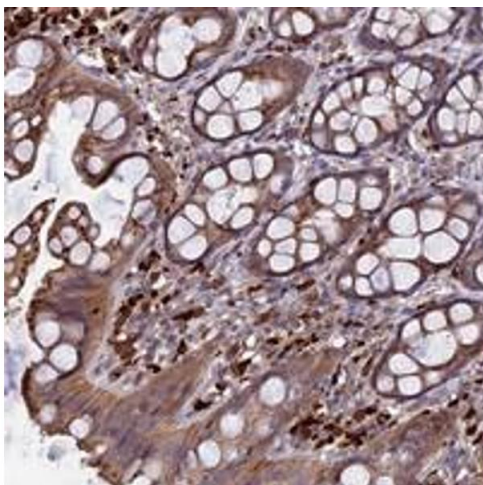
---

Storage Comment: Store at 4°C. For long term storage store at -20°C.  
Aliquot to avoid repeated freezing and thawing.

---

## Images

---



### Immunohistochemistry

**Image 1.** Immunohistochemical staining of human rectum with RLTPR polyclonal antibody shows moderate cytoplasmic positivity in glandular cells at 1:50-1:200 dilution.