

Datasheet for ABIN5587128
anti-LPPR1 antibody (AA 1-325)[Go to Product page](#)

1 Image

Overview

Quantity:	50 µg
Target:	LPPR1
Binding Specificity:	AA 1-325
Reactivity:	Human
Host:	Mouse
Clonality:	Polyclonal
Conjugate:	This LPPR1 antibody is un-conjugated
Application:	Western Blotting (WB)

Product Details

Purpose:	Mouse polyclonal antibody raised against a full-length human RP11-35N6.1 protein.
Immunogen:	RP11-35N6.1 (NP_060223, 1 a.a. ~ 325 a.a) full-length human protein.
Sequence:	MAVGNNNTQRS YSIIPCFIV ELVIMAGTVL LAYYFECTDT FQVHIQGFFC QDGDLMKPYP GTEESFITP LVLYCVLAAT PTAIFIGEI SMYFIKSTRE SLIAQEKIL TGECCYNPL LRRIRFTGV FAFGLFATDI FVNAGQVVTG HLTPYFLTVK KPNYTSADCQ AHHQFINNGN ICTGDLEVIE KARRSFPSKH AALSIYSALY ATMYITSTIK TKSSRLAKPV LCLGTLCTAF LTGLNRVSEY RNHCSDVIAG FILGTAVALF LGMCVWHNFK GTQGSPSKPK PEDPRGVPLM AFPRIESPLE TLSAQNHSAS MTEVT
Cross-Reactivity:	Human
Characteristics:	This antibody is validated with a full-length human protein expressed from a mammalian transfected lysate, demonstrating high reactivity, sensitivity and specificity. In addition, this

Product Details

antibody has the ability to recognize both linear and conformational protein epitopes for maximum antibody performance!

Target Details

Target:	LPPR1
Alternative Name:	RP11-35N6.1 (LPPR1 Products)
Background:	Full Gene Name: plasticity related gene 3 Synonyms: MGC26189,PRG-3
Gene ID:	54886
NCBI Accession:	NM_017753

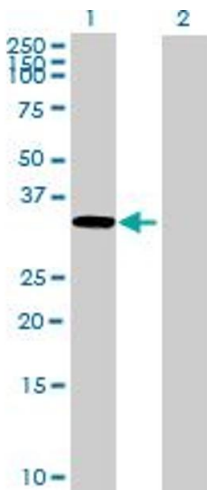
Application Details

Application Notes:	Optimal working dilution should be determined by the investigator.
Restrictions:	For Research Use only

Handling

Buffer:	In 1x PBS, pH 7.4
Storage:	-20 °C
Storage Comment:	Store at -20°C or lower. Aliquot to avoid repeated freezing and thawing.

Images



Western Blotting

Image 1. Western Blot analysis of RP11-35N6.1 expression in transfected 293T cell line (H00054886-T01) by RP11-35N6.1 MaxPab polyclonal antibody. Lane 1: RP11-35N6.1 transfected lysate(35.75 KDa). Lane 2: Non-transfected lysate.