

Datasheet for ABIN5587169

anti-PSMD6 antibody[Go to Product page](#)**1** Image

Overview

Quantity:	100 µL
Target:	PSMD6
Reactivity:	Saccharomyces cerevisiae
Host:	Rabbit
Clonality:	Polyclonal
Conjugate:	This PSMD6 antibody is un-conjugated
Application:	Western Blotting (WB), Immunoprecipitation (IP)

Product Details

Purpose:	Rabbit polyclonal antibody raised against recombinant RPN7.
Immunogen:	Recombinant protein corresponding to <i>Saccharomyces cerevisiae</i> RPN7.
Specificity:	This antibody react with <i>S. cerevisiae</i> RPN7.
Cross-Reactivity:	Saccharomyces cerevisiae

Target Details

Target:	PSMD6
Alternative Name:	RPN7 (PSMD6 Products)
Background:	Full Gene Name: Essential, non-ATPase regulatory subunit of the 26S proteasome, similar to another <i>S. cerevisiae</i> regulatory subunit, Rpn5p, as well as to mammalian proteasome subunits
Gene ID:	856223

Target Details

Pathways: [Mitotic G1-G1/S Phases](#), [DNA Replication](#), [Synthesis of DNA](#), [Ubiquitin Proteasome Pathway](#)

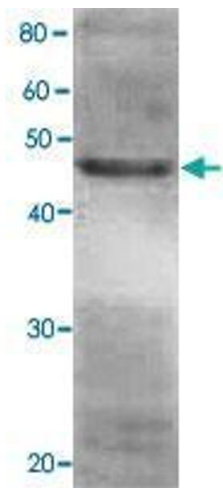
Application Details

Application Notes:	Western Blot (1:1000) The optimal working dilution should be determined by the end user.
Restrictions:	For Research Use only

Handling

Format:	Liquid
Buffer:	In 10 mM Tris-HCl, 100 mM NaCl, pH 7.4 (0.05 % sodium azide)
Preservative:	Sodium azide
Precaution of Use:	This product contains Sodium azide: a POISONOUS AND HAZARDOUS SUBSTANCE which should be handled by trained staff only.
Storage:	-20 °C
Storage Comment:	Store at -20°C. Aliquot to avoid repeated freezing and thawing.

Images



Western Blotting

Image 1. Detection of RPN7 (49 kDa) in the crude extract of *S. cerevisiae* by Western blotting using RPN7 polyclonal antibody .