



[Go to Product page](#)

Datasheet for ABIN5587170

anti-RPP25 antibody

2 Images

Overview

Quantity:	100 µL
Target:	RPP25
Reactivity:	Human
Host:	Rabbit
Clonality:	Polyclonal
Conjugate:	This RPP25 antibody is un-conjugated
Application:	Immunohistochemistry (Paraffin-embedded Sections) (IHC (p)), Immunofluorescence (IF)

Product Details

Purpose:	Rabbit polyclonal antibody raised against recombinant RPP25.
Immunogen:	Recombinant protein corresponding to amino acids of human RPP25.
Sequence:	ASLSVLKNVP GLAILLSKDA LDPRQPGYQP PNPHPGPSSP PAAPASKRSL GEPAAGEGSA KRSQPEP
Isotype:	IgG
Cross-Reactivity:	Human

Target Details

Target:	RPP25
Alternative Name:	RPP25 (RPP25 Products)
Background:	Full Gene Name: ribonuclease P/MRP 25 kDa subunit

Target Details

Synonyms: FLJ20374

Gene ID: 54913

Application Details

Application Notes: Immunohistochemistry (1:50-1:200)
The optimal working dilution should be determined by the end user.

Restrictions: For Research Use only

Handling

Format: Liquid

Buffer: In PBS, pH 7.2 (40 % glycerol, 0.02 % sodium azide)

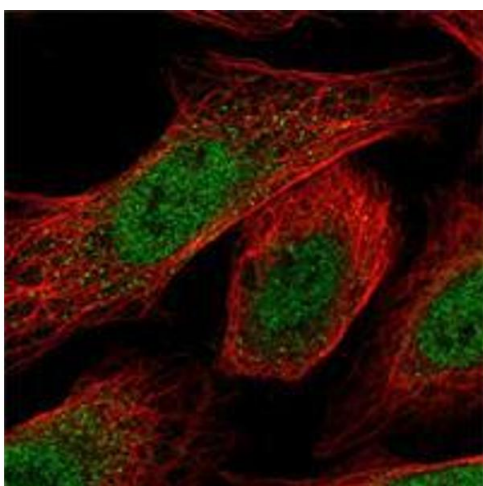
Preservative: Sodium azide

Precaution of Use: This product contains Sodium azide: a POISONOUS AND HAZARDOUS SUBSTANCE which should be handled by trained staff only.

Storage: 4 °C,-20 °C

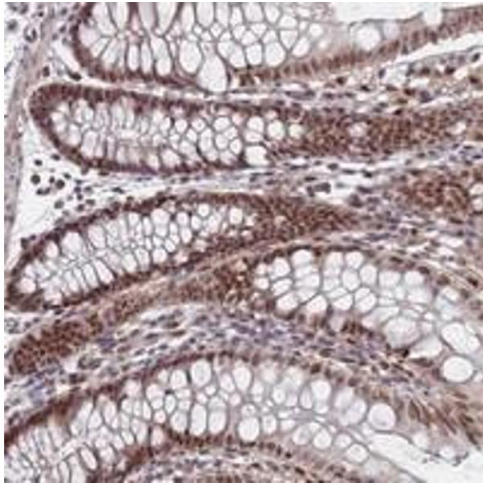
Storage Comment: Store at 4°C. For long term storage store at -20°C.
Aliquot to avoid repeated freezing and thawing.

Images



Immunofluorescence

Image 1. Immunofluorescent staining of human cell line U-2 OS shows positivity in nucleus but not nucleoli. Using RPP25 polyclonal antibody .



Immunohistochemistry

Image 2. Immunohistochemical staining of human colon with RPP25 polyclonal antibody shows moderate nuclear positivity in glandular cells at 1:50-1:200 dilution.