

Datasheet for ABIN5587212  
**anti-RPS6KA2 antibody (C-Term)**[Go to Product page](#)

## 1 Image

## Overview

Quantity:	100 µL
Target:	RPS6KA2
Binding Specificity:	C-Term
Reactivity:	Rat
Host:	Rabbit
Clonality:	Polyclonal
Conjugate:	This RPS6KA2 antibody is un-conjugated
Application:	Western Blotting (WB)

## Product Details

Purpose:	Rabbit polyclonal antibody raised against synthetic peptide of Rps6ka2.
Immunogen:	A synthetic peptide corresponding to C-terminus of rat Rps6ka2.
Specificity:	This antibody has been demonstrated to work in human tissue. It is anticipated that This antibody will work in bovine, canine, chicken, mouse and rat tissues based on the fact that these species have 100 % homology with the amino acid sequence used as antigen. specific to ~90k RSK2 protein.
Cross-Reactivity:	Chicken, Cow, Dog, Human, Mouse, Rat

## Target Details

Target:	RPS6KA2
Alternative Name:	Rps6ka2 ( <a href="#">RPS6KA2 Products</a> )

Target Details

Background:	Full Gene Name: ribosomal protein S6 kinase polypeptide 2
Gene ID:	117269
Pathways:	<a href="#">MAPK Signaling</a> , <a href="#">Neurotrophin Signaling Pathway</a> , <a href="#">Regulation of Systemic Arterial Blood Pressure by Hormones</a> , <a href="#">Activation of Innate immune Response</a> , <a href="#">Toll-Like Receptors Cascades</a>

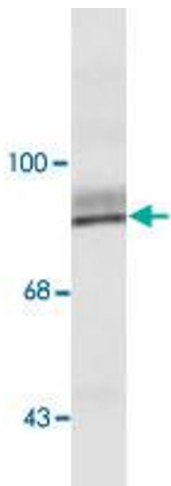
Application Details

Application Notes:	Western Blot (1:1000) The optimal working dilution should be determined by the end user.
Restrictions:	For Research Use only

Handling

Format:	Liquid
Buffer:	In 10 mM HEPES, 150 mM NaCl, pH 7.5 (50 % glycerol, 0.1 mg/mL BSA)
Storage:	-20 °C
Storage Comment:	Store at -20°C. Aliquot to avoid repeated freezing and thawing.

Images



Western Blotting

**Image 1.** Western blot of HeLa lysate showing specific immunolabeling of the ~90k Rps6ka2 protein.